

A

ENT

FIELD MUSEUM OF NATURAL HISTORY—ETHNOLOGY 548-8/09

258918

Provenience: China (Szechuan)

A-B

Field No.

People or Culture: Chinese

Object: ANKLE BANDS (WEAVING STITCH).

Material: Cotton and blue thread.

Description: Stylized design in blue thread on white cloth.

Neg. No.

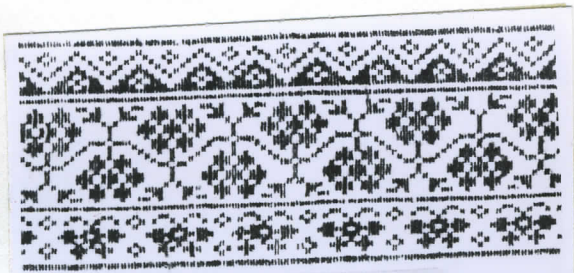
P. 161

Dimensions: 27 x 30
(in cm.)

Acc.

3442

Collection: Bieber gift 12/1979



258918