

A **ENT** CHICAGO NATURAL HISTORY MUSEUM—ETHNOLOGY *54B-8/09*  
**253404**

**Provenience:** CHINA \*

**Field No.**

**People or Culture:** Chinese

Period: 19th cen. acc.  
to Carl Schuster

BTFE 21

**Object:** Pair of ankle bands

alb

**Material:** Embroidered silk gauze

**Description:** All-over satin and Florentine  
stitch on silk gauze; octagons contain-  
ing lozenges containing flowers in  
green, yellow, rose, tan, blue and white.

**Neg. No.**

NEG. ALB.P.336

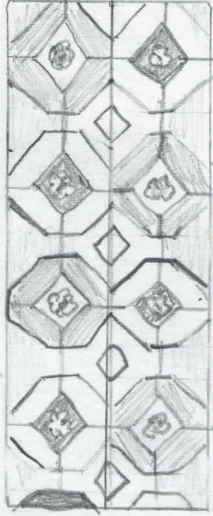
\*Bought in Peking, but the group  
was mftd. "mostly" in Shantung/Shansi.

**Dimensions:**  
(in cm.)

32.0 x 10.8

**Acc.** 2786

**Collection:** C. F. Bieber Collection of Asian Folk and Minor  
Arts, purchased from Miss Caroline Frances Bieber  
15 November 1962



253404