

A
ENT
253402

CHICAGO NATURAL HISTORY MUSEUM—ETHNOLOGY

54B-8/29

Provenience: CHINA*

Field No.

BTFE 15
alb

People or Culture: Chinese

Period: 19th cen. acc.

Object: Pair of ankle or

to Carl Schuster

sleeve bands

Material: Silk gauze

Description: Cross-stitch on silk gauze;
geometric pattern in blue, orange, buff,
and pale green; black floral/geometric
border on both ends and one side.

Neg. No.

ALB. P. 336

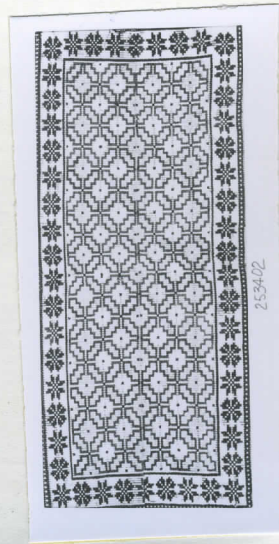
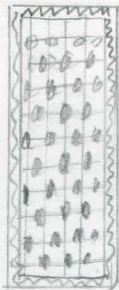
*Bought in Peking, but the group was
mftd. "mostly" in Shantung/Shansi.

Dimensions:
(in cm.)

15.0 X 20.5

Acc. 2786

Collection: C. F. Bieber Collection of Asian Folk and Minor
Arts, purchased from Miss Caroline Frances Bieber
15 November 1962



2534/2