

A **ENT**

CHICAGO NATURAL HISTORY MUSEUM—ETHNOLOGY

54B 8/06

253380

Provenience: CHINA*

Field No.

People or Culture: Chinese

Period: 19th cent. acc.
to Carl SchusterBTFE alb
16

Object: Pair of sleevebands

Material: Embroidered silk gauze

Description: All-over satin stitch on gauze;
Lozenge within lozenge in pink gold, red, green,
and turquoise Black cross-stitch swastika
border.

Neg. No.

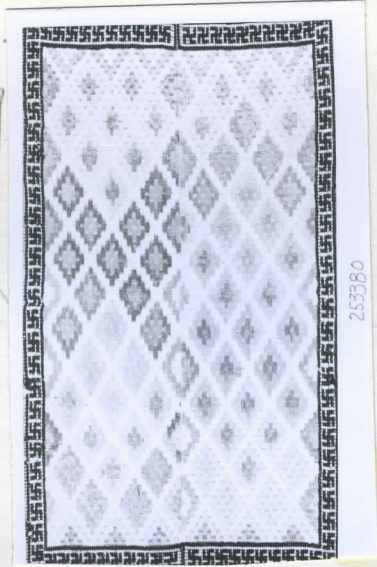
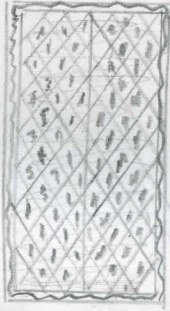
ALB-P. 336

*Collected in Peking but group was mftd.
"mostly" in Shantung/Shansi.Dimensions:
(in cm.)

19.0 x 34.8

Acc. 2786

Collection: C. F. Bieber Collection of Asian Folk and Minor
Arts, purchased from Miss Caroline Frances Bieber
15 November 1962



25380