

A  
ENT  
253376

CHICAGO NATURAL HISTORY MUSEUM—ETHNOLOGY

54B- \$106

Provenience: CHINA \*

Field No.

BTFE alb  
25

People or Culture: Chinese

Period: 19th cen. acc.

Object: Pair of sleevebands

to Carl Schuster

Material: Embroidered silk gauze

Description: All-over satin stitch embroidery on gauze; cranes in lozenges; colors: brown, red, rust, white, black, green, yellow, pink, and pale, blue.

\*Collected in Peking but group was mftd.  
"mostly" in Shantung/Shansi.

Neg. No.

ALB. P. 336

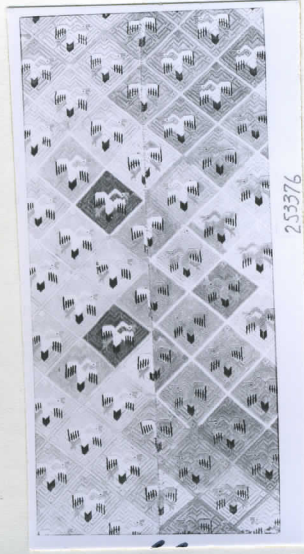
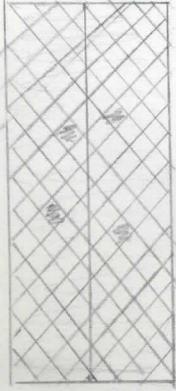
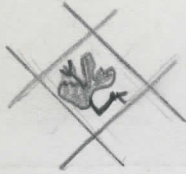
Dimensions:  
(in cm.)

18.5 x 35.0

Acc. 2786

Collection: C. F. Bieber Collection of Asian Folk and Minor Arts, purchased from Miss Caroline Frances Bieber  
15 November 1962





25376