

A
253373

CHICAGO NATURAL HISTORY MUSEUM—ETHNOLOGY

54 B-8/06

Field No.

BTFE 116
28

Provenience: CHINA *

People or Culture: Chinese

Period: 19th cent. acc.
to Carl Schuster

Object: Pair of sleevebands

Material: Embroidered silk gauze

Description: All-over satin stitch on gauze. Alternating floral and cruciform motif in lozenges in blue, buff, yellow, chartreuse, red and white.

*Collected in Peking, but group was mftd.
"mostly" in Shantung/Shansi.

Neg. No.

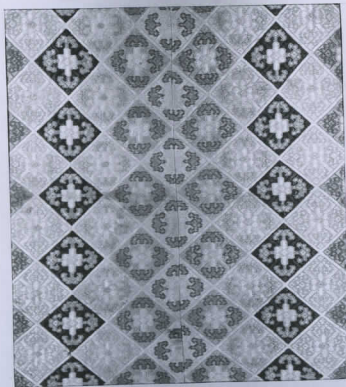
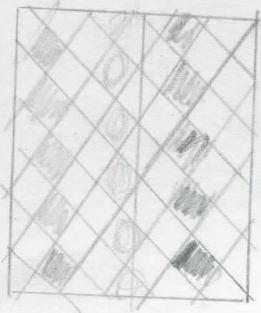
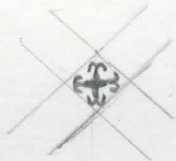
ALB. P. 331

Dimensions:
(in cm.)

30.0 x 32.0

Acc. 2786

Collection: C. F. Bieber Collection of Asian Folk and Minor Arts, purchased from Miss Caroline Frances Bieber
15 November 1962



253373