

54B-8/03

ENT
235544

Provenience: CHINA

Field No.

People or Culture: Chinese . Very late Ching

Object: Woman's jacket

Material: Silk and satin

Woman's jacket of plain black silk with
Description: round neck and front fastening. Borders
around neck, down front, along bottom of four brocaded
ribbon borders and two blue satin bands. Sleeve bor-
der of plum satin embroidered in satin stitch in
shades of blue and white; central peaches flank by
lotus, prunus and other flowers & bats. With gold-
colored buttons with loop fastenings. Lined
inside with black silk. Very late Ching.

Neg. No.

Dimensions
(in cm.)

Max L - 64.8 Max. W. - 155.5

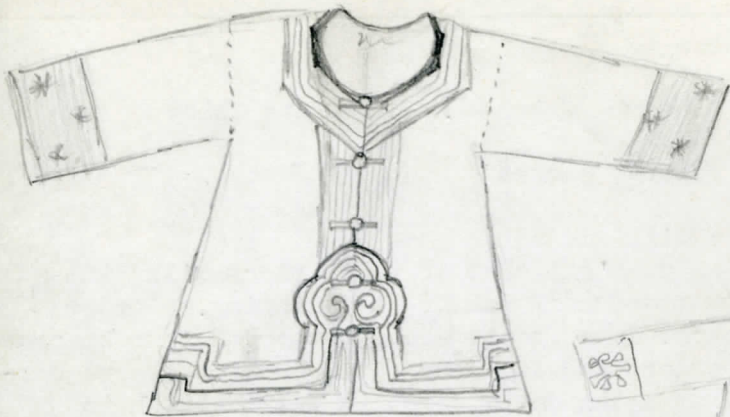
Circum of arm hole - 69.0

(See sketch on the back)

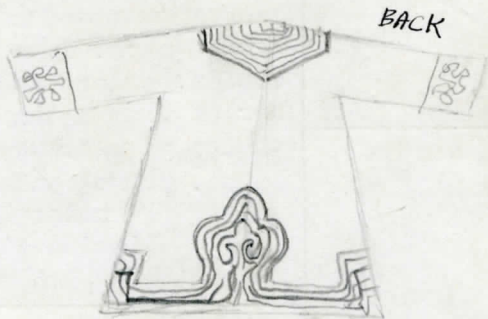
Acc.

2806

Collection: Presented by Rev. (Miss) Ellen M.
Studley 5 August 1963. Collected by donor
circa 1923-1963.



FRONT



BACK