

190691

ENT

CHICAGO NATURAL HISTORY MUSEUM—ETHNOLOGY

13-13

Field No.

Provenience: Guatemala, Dept. of Totonicapan, Totonicapan

People or Culture: Ladino.

Object: Cup.

Material: Pottery.

Description: Cup has one handle and the body narrows at the top and bottom. It is made of pinkish tan clay with whitish glaze interior and exterior. The exterior has been painted with blue, green, yellow glaze in broad vertical stripes. The handle is painted with blue glaze

Neg. No.

A31

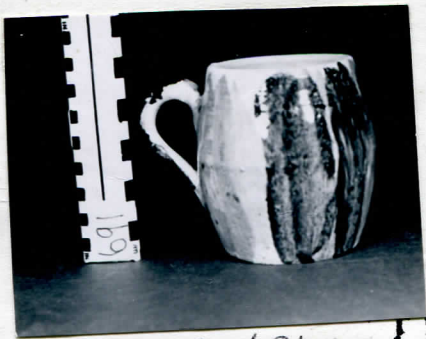
Dimensions:
(in cm.)

Diameter-9.0, Height-9.3.

Acc.

3038

Collection: Purchased from Mr Louis E. Bock,
August 8 1968; collector, Mr. Bock, 1968



Cat no. 190691