

ENT A

190680

Field No.

CHICAGO NATURAL HISTORY MUSEUM-ETHNOLOGY 13-13

Provenience: Guatemala, Dept. of Totonicapan, Totonicapan.

People or Culture: Ladino

Object: Bowl.

Material: Pottery.

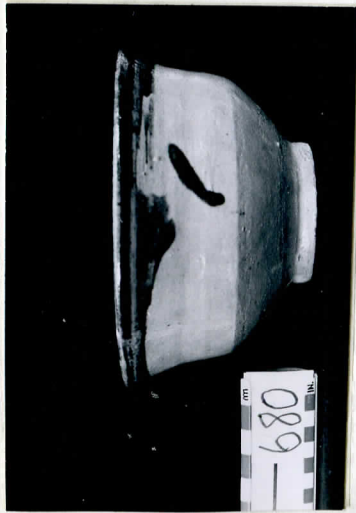
Description: Bowl has flaring top, a ridge on exterior side, and rests on circular base. It is made of red clay with a yellowish glaze interior and exterior. There is green glaze band around and on the top of the bowl, and a spot of green glaze on exterior.

Neg. No.

Dimensions: Diameter-13.9, height-7.3.
(in cm.)

Acc. 3038

Collection: Purchased from Mr. Louis E. Bock
8 August 1968; Collection Mr. Bock, 1968.



cat. no. 190680