

ENT A

190678

Field No.

Neg. No.

A70

Acc. 3038

CHICAGO NATURAL HISTORY MUSEUM—ETHNOLOGY 13-13

**Provenience:** Guatemala, Dept. of Totonicapan, Totonicapan.

**People or Culture:** Ladino

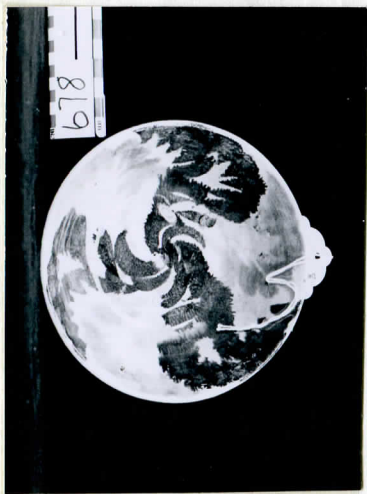
**Object:** Bowl.

**Material:** Pottery.

**Description:** Bowl has flattened bottom with a piece of glaze chipped off, flaring top, and rests on circular base. It is made of mica-tempered pinkish clay with whitish glaze interior and exterior. Interior has glaze design of three blue and three green curves radiating out from the center.

**Dimensions:** Diameter-14.4, height-5.6.  
(in cm.)

**Collection:** Purchased from Mr. Louis E. Bock  
8 August 1968; collector, Mr. Bock, 1968.



Cat. No. 190678