

ENTA

CHICAGO NATURAL HISTORY MUSEUM—ETHNOLOGY 13-13

190677

Provenience: Guatemala, Dept. of Totonicapan, Totonicapan.

Field No.

People or Culture: Ladino**Object:** Bowl.**Material:** Pottery.**Description:** Bowl has flaring top, a crack down side, and rests on circular base. It is made of pinkish clay with whitish glaze interior and exterior. On interior there is painted in glaze a blue flower, yellow branch, and green leaves. On exterior there are painted in glaze blue and brown flowers, green leaves, and yellow branches.

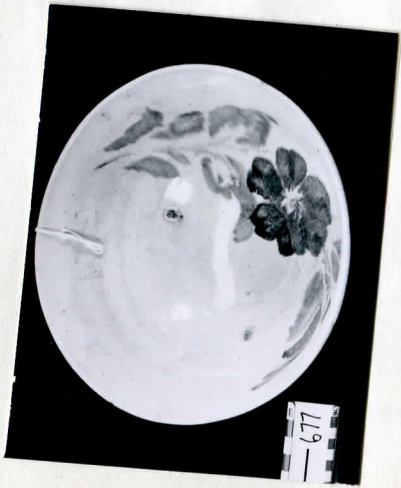
Neg. No.

A29

Dimensions: Diameter-20.1, height-10.4.
(in cm.)

Acc. 3038

Collection: Purchased from Mr. Louis E. Bock
8 August 1968; collector, Mr. Bock, 1968.



cat. no. 190677