

A

ENT

CHICAGO NATURAL HISTORY MUSEUM

13-5

189959

LOCATION:

Hall

Case

Room

#8

201.36

Neg. No.

92183

Provenance: **GUATEMALA**

People or Culture: Nahuatl

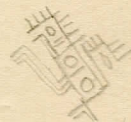
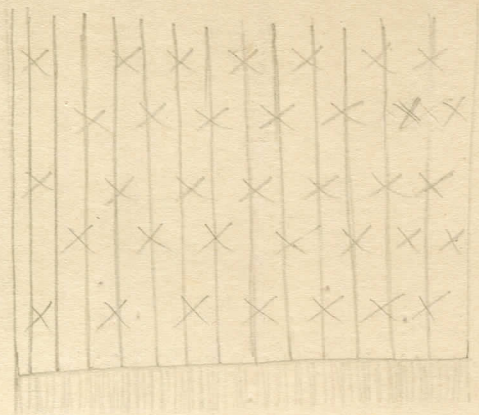
Description: Man's Tzute or neck cloth -- Back-ground- black; design- geometrical birds and animals, pink stripes; colors-red, pink, blue green, and orange; fringe at both ends.

Dimensions: 65x78
(in cm.)

Collection: Presented by Miss Florence D. Bartlett.
June 2, 1947.

Acc. 2393

Scheme of design layout



detail of a bird

X = an animal or bird