

A

ENT

CHICAGO NATURAL HISTORY MUSEUM

13-02

190015

Provenance: **GUATEMALA**

LOCATION:

People or Culture: Quetzaltenango

Hall

Case

Room

Description: Tablecloth -- Background - white; design - strip of geometric designs across the center and on the borders, red stripe down the sides; colors - red, yellow, purple; knotted fringe and tassels. Design similar to # 190014, but on smaller scale.

#20

259.36

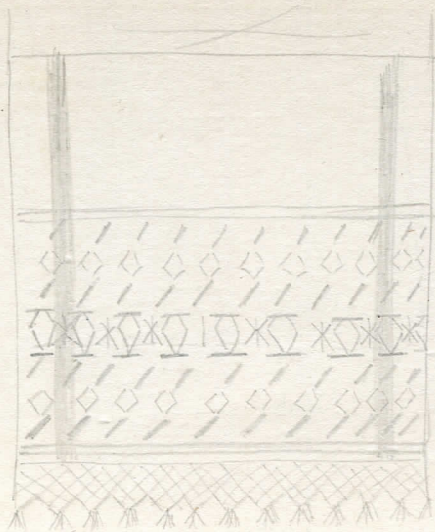
Neg. No.

Dimensions: 86x162
(in cm.)

Collection: Presented by Miss Florence D. Bartlett.
June 2, 1947.

Acc. 2393

Scheme of design layout



X = design repeated