

A

ENT

FIELD MUSEUM OF NATURAL HISTORY

57-6/08

H. N. Higinbotham Collection. Transferred from Dept. I, Acc. 140. Never catalogued until Sept., 1940

82302

LOCATION:

Provenance: **INDIA** Gujarat.

People:

Description: Necklace of two rows of hexagonal beads and a pendant of open-work set with rubies and emeralds, and little gold balls, mounted on a red cord with cone-shaped wrappings of gold thread, and a tri-colored tassel. Similar to 82301, more stones.

Field No.

702

Neg. No.

P.245

(Information derived from old labels found in bases of old gem room cases. Field number on backs of labels corresponded to numbers on tags on specimens.) Collector: unknown.

Acc. 2249

Dimensions:

INDEX GUIDES

1.

2.

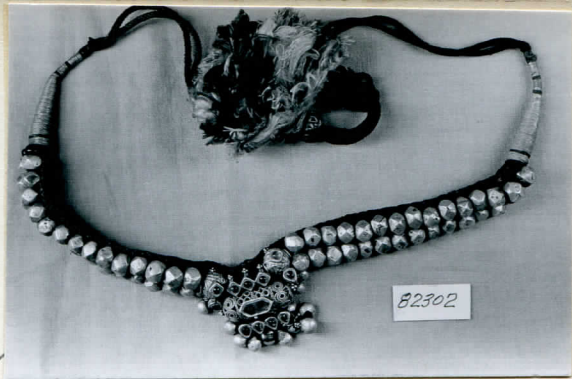
3.

4.

5.

6.

7.



54