

A

82261

ENT

FIELD MUSEUM OF NATURAL HISTORY

57-6/04

H. N. Higinbotham Collection. Transferred from Dept. I, Acc. 140. Never catalogued until Sept., 1940

LOCATION:

Hall /

Case 8

Room

Field No.

568

Neg. No.

p. 245

Acc. 2249

Provenance: INDIA Delhi

People:

Description: Head Ornament. Gold plaque enameled back, set with rock crystals. Eleven strings of pearls with red beads on top and green on bottom and gold drops, in square, diamond star and crescent, tear drop, and flower shape set with rubies, rock crystal, turquoise and emeralds and ending in drops of tiny pearls tipped with emeralds.

(Information derived from old labels found in bases of old gem room cases. Field number on backs of labels corresponded to numbers on tags on specimens.) Collector: unknown.

Dimensions:

INDEX GUIDES

1.

2.

3.

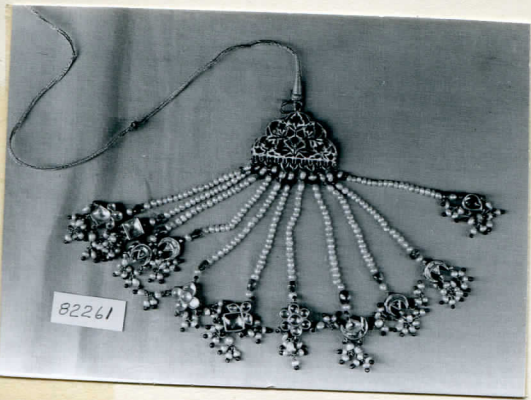
4.

5.

6.

7.

109



82261