

A

82188

## FIELD MUSEUM OF NATURAL HISTORY

57-6/08

H.N. Higinbotham Collection. Transferred from Dept. I, Acc. 140. Never catalogued until Sept., 1940

Provenance: **INDIA**, Delhi.

People:

Description: Necklace of tear-shaped pendants hanging from gold wrapped silk cord. Obverse side, crystal; reverse red enamel. Emeralds(?) hanging from pendants. Coned-shaped wrappings of gold thread.

LOCATION:

Hall

Case

Room

Field No.

540

Neg. No.

P. 2+3

(Information derived from old labels found in bases of old gem room cases. Field number on backs of labels corresponded to numbers on tags on specimens.) Collector: unknown.

Acc. 2249

Dimensions:

## INDEX GUIDES

1.

2.

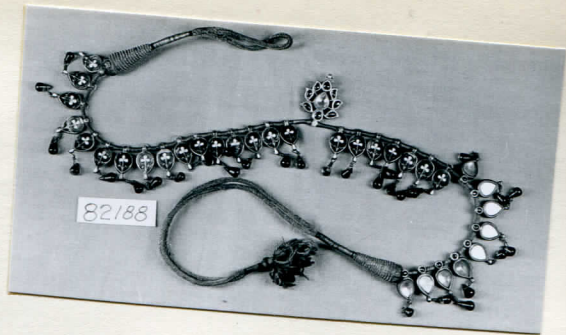
3.

4.

5.

6.

7.



82188