

AENT

CHICAGO NATURAL HISTORY MUSEUM—ETHNOLOGY

548-2/23

235086

A - B

Field No.

Provenience: China

People or Culture: Chinese

Object: Cricket gourd

Material: Gourd, wood

Description: A) Light brown cricket gourd with rim of dark brown wood. B) Carved lid of dark brown wood. Floral design. - A) has been broken and is glued together, *at the Museum.*

Neg. No.

ALB. P. 136

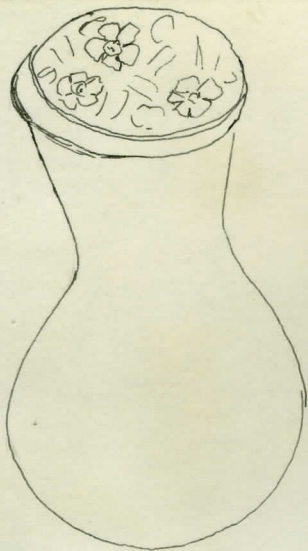
Dimensions:

(in cm.)

MAX. DIAM. : 5.4 ; HEIGHT : 8.3

Acc. 2820

Collection: Fuller Collection: presented by
Mrs. A. W. F. Fuller, 16 January 1964.



Cricket gourd. Plain gourd with rosewood bezel;
cover in two parts; bezel of brown wood,
insert coconut shell with carved floral motif.

See CONSERVATION VIEW

