

A

ENT

CHICAGO NATURAL HISTORY MUSEUM—ETHNOLOGY

54B-4/06

254813

Provenience: CHINA, probably Peking

Field No.

People or Culture: Chinese      Period: Late Ch'ing

Object: Woman's pipe case.

A 73

Material: Gauze

Description: Vase-shaped. Obverse: florentine stitch, clouds, butterfly, two Buddha's hands and blue lion dog with ball. Reverse: clouds, moon (yueh) bat and ch'i-lin. Colors: blues, white, gold, gray-brown, green, red, black. Bound with black braid, lined with blue cotton.

Neg. No.

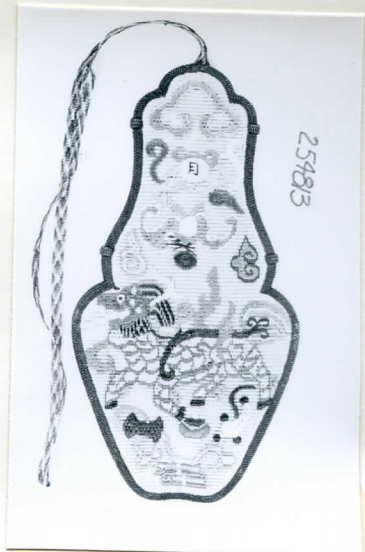
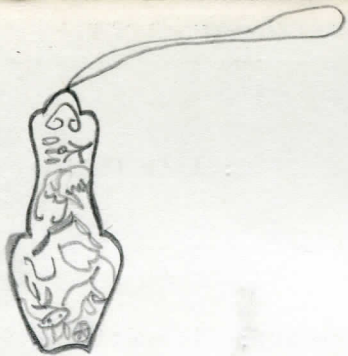
P. 16. P. 341

Dimensions:  
(in cm.)

9.1 x 17.9

Acc. 2791

Collection: C. F. Bieber Lion Dog Collection, presented  
by Miss Caroline Frances Bieber, 2 January 1963



25483