

A **ENT**

CHICAGO NATURAL HISTORY MUSEUM—ETHNOLOGY

54B-4168

234856

Provenience: CHINA Ssu-ch'uan, Ch'êng-tu Hsien, Ch'êng
-tu. 104.04/30.40

四川 成都

Field No.

People or Culture: Chinese

1937: D250

Object: Opium smoker's implement rest

Material: Brass

Description: A cut-out figure with a geometric design (simplified Shou character?) in center and bordered with sharp and curved projections. Near the base on both faces/^{are} two concave depressions. The figure is riveted to a flat base figure of a bat with a cut-out four-leaf clover design in center. Rest and base come apart. (See sketch on the back).

Neg. No.

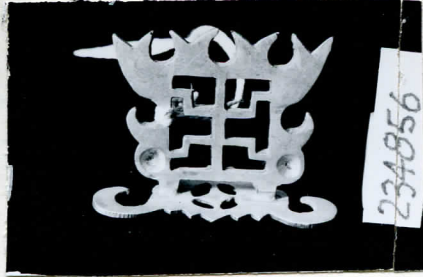
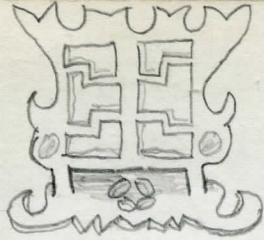
A.L.B. P. 370

Dimensions:

(in cm.) 3.9 x 1.9 x 2.7

Acc. 2724

Collection: collected by Dr. Carl Schuster; purchased from Dr. Schuster 7 December 1960



234856