

ENT
235226

CHICAGO NATURAL HISTORY MUSEUM—ETHNOLOGY

Provenience: CHINA

54 B - 5/02

Field No.

People or Culture: Chinese

Object: shadow figure

Material: painted hide, wire, bamboo

Description: Probably body of an official, black with flowers in tan, green and red on back and chest, tan floral center closing with black tie; lower skirt/^{has} tan grill-work with swastikas then a band of red flowers and green leaves on a tan background; tan and black elevated shoes; red and green flowers just above cut-out green bands on wrists; shoulders, elbows, torso, and legs hinged

Dimensions:

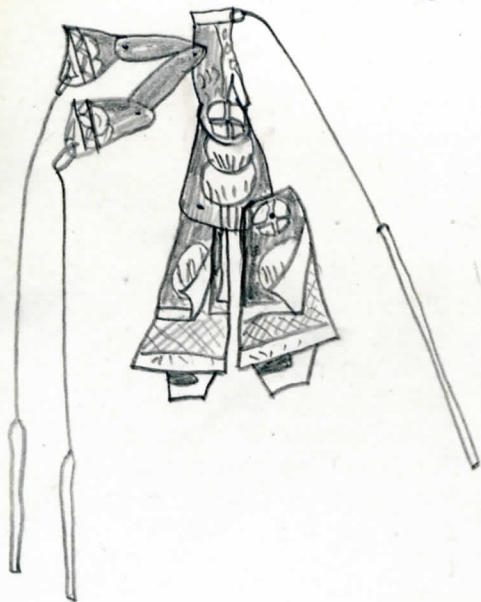
(in cm.)

20.5 x 5.5 maximum (over)

Neg. No.

Acc. 2687

Collection: Purchased from Miss Edna H. Bahr
24 December 1959



n
with wheels at the torso and
leg hinges; 3 wire and bamboo
handles attached to neck and
hands; hinged hands.