


## FIELD MUSEUM OF NATURAL HISTORY.

Country ChinaLocality PEKINGPeople Chinese

Name Pigeon-whistle. Of small gourd fitted with  
 one large <sup>opening</sup> and four small <sup>reed</sup> bamboo pipes. Attached  
 to either side is a <sup>reed</sup> bamboo pipe. Lacquered black  
 and incised with character Ming , ~~"the cry of~~  
~~"a bird" or "a sonorous note."~~ *maker's name.*

Collection Capt. Marshall Field Expedition to China, 1923.

Notes

Acc. 1462

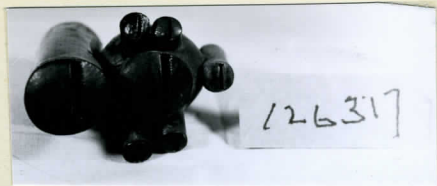
Width 5.3 cm Length 5.3 cm Height \_\_\_\_\_ Price \_\_\_\_\_

126317

ENT

54 B-2/11  
indNEG. ALB  
P. 148

917



126317