

A **ENT**

FIELD MUSEUM OF NATURAL HISTORY—ETHNOLOGY

24-35

222175

Field No.

KA-37a-b

Provenience: Africa Kenya**People or Culture:** Kamba Location Machakos market**Object:** Packet tobacco (kilaiku)**Material:** Tobacco, paper, sisal string

Description: Tobacco is grown on a shamba and dried in the sun. Women then pound in a mortar and put it in a tin with a lid. At the market customers are allowed to sample. Women take tobacco on the tongue, both men and women sniff it. Kamba do not chew tobacco. Roughly rectangular packet wrapped in brown paper and tied with sisal fibre string.

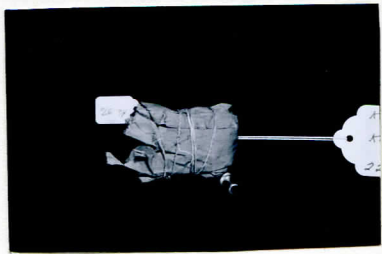
Neg. No.

93

Dimensions: 6 cm. by 4.25 cm.
(in cm.)

Acc. 3260

Collection: Field Museum of Natural History Purchase 1974
Collected by Mrs. Ann Prewitt 1972



Catalogue # 222175.