

**AGENT**

CHICAGO NATURAL HISTORY MUSEUM—ETHNOLOGY

16-35

242543

A,B

Provenience: PERU Colonia Calleria, Rio Calleria

Field No.

4

People or Culture: Shipibo

Object: Chief's pipe

Material: Wood, bone

**Description:** A cone-shaped, black painted pipe with all over incised geometric design. The base slightly flares out ending in a stubby cross-shaped ornament. On the top end is a 1.8 cm. hole (dia.) for the tobacco, extending down to about midway where a pencil-like hollowed bone about 6.5 cm. long is stuck into the hole horizontally. A carved, flat protrusion with incised design is outside the rim of the hole on top. (Sketch on back) Made by men.

**Dimensions:**

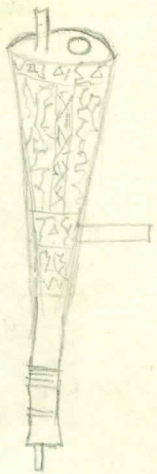
(in cm.)

Ht. - 26.5 Circum. at largest point - 13.7

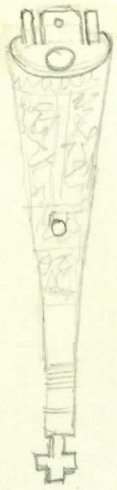
Neg. No.

Acc. 2771

Collection: Purchased in 1962 from Borys Malkin, who made collection in 1961.



side



front