

AGENT

FIELD MUSEUM OF NATURAL HISTORY—ETHNOLOGY

22-57

222485

Provenience: Africa Cameroon

Field No.

People or Culture:**Object:** Wall plaque**Material:** Wood frame, beads, seeds, shells

Description: Face plaque made by covering a slightly modeled frame with burlap and covering it with beads, seeds, and shells to portray the front of a human head. The face is covered with orange beads with features of black and white beads. Headdress is of seeds each strung with a colored bead. Plaque has cowrie shells sewn around the edge and down the center of the headdress. Back is covered with coarse cloth and seeds.

Neg. No.

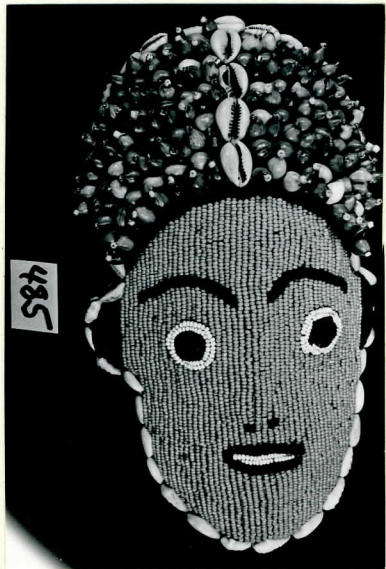
74

Dimensions: Height 25.5 cm. Width 15 cm.
(in cm.)

Acc.

3268

Collection: Gift of Dr. Gwendolen Carter, collector.
April 15, 1974; collected 1950-1973.



Catalogue # 222 485.