

220853

A-F

Field No.

Provenience: Sierra Leone

People or Culture: Mendi

Object: Mask costume: Yoma Yoma Devil

Material: Cotton cloth, raffia fibers, undetermined fibers (hair?), wood, cowries, feathers, cane

Description: A Head dress and face mask: crown and cylindrical stalk made of cane covered with Europ. cloth in diff. colors, 3 padded rings around stalk, each ring separated with cowries sewn end to end, plumes at apex of stalk, between crown and stalk 6 wooden tablets (3 to a side) with Arabic inscriptions; around crown 4 pouches sewn to cloth; "bangs" of undetermined fiber over face mask; face mask

Dimensions: Head dress total length (over)
(in cm.) 89 cm.

Neg. No.

Ac

Acc. 2924

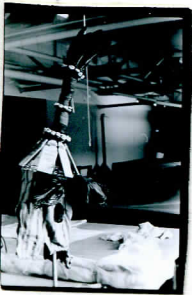
Collection: Purchased from Mr. Maxwell F. Samura (collector), 13 October 1966.

a simple hood of homespun cloth, a black patch sewn on center.
B-Shirt: voluminous poncho-like garment of homespun cloth; one tailored sleeve; the other side closed; in the middle of the chest a ring-like pad covered with red cloth decorated by 2 rows of cowries sewn end to end.
C-Ruff of raffia fibers.
D.&E-2 Anklets of raffia fibers.
F-"Sceptre": armature prob. of cane covered with rings of red and black Europ. cloth.

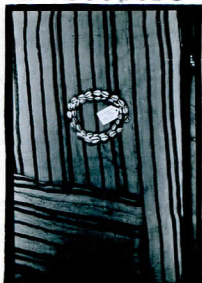
220853 A-F

Dimensions: diam. of crown of head dress 24.5 cm.
 shirt length 114 cm, width 93 cm.
 ruff length 65 cm, width 39 cm.
 anklets length 54 cm., width 21 cm.
 sceptre length 61 cm.

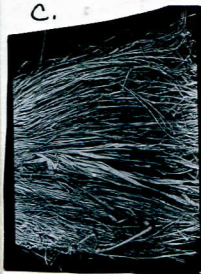
A.



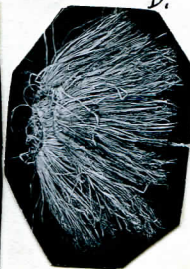
B.



C.



D.



E.



F.

