

ENT**210286**

CHICAGO NATURAL HISTORY MUSEUM—ETHNOLOGY

22-36

Field No.

88

R. 2/56

Provenience: Benin, Nigeria

People or Culture: Bini

Object: Fan

Material: Hide, wood

Description: Fan: similar to no. 210284 except the designs are formed of hide and not flannel.

Neg. No.

PHOTO ON REVERSE SIDE

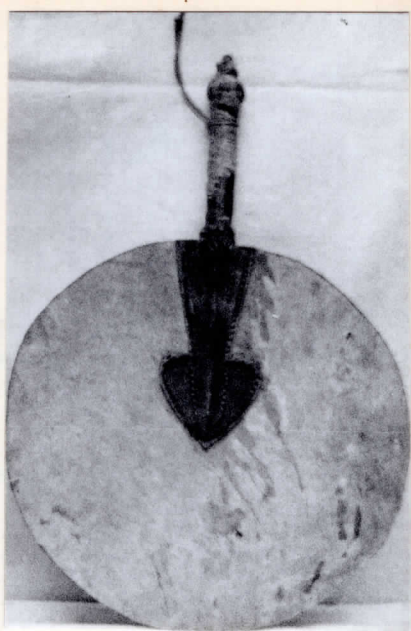
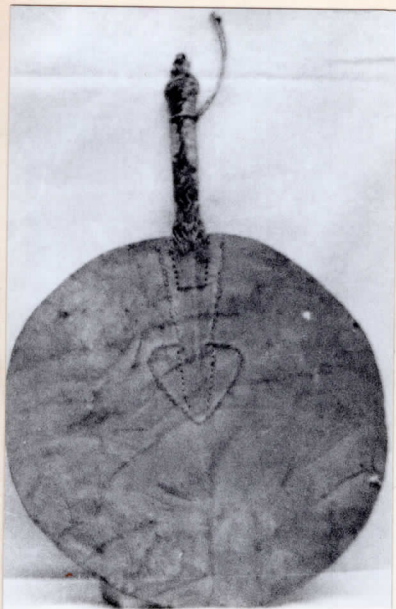
Dimensions:
(in cm.)

L. 38.7; max. w. 26.1

Acc.

2815

Collection: Fuller Collection: presented by
Mrs. A. W. F. Fuller, 13 November 1963



THE UNIVERSITY OF CHICAGO
LIBRARY

1912