

ENT A

FIELD MUSEUM OF NATURAL HISTORY—ETHNOLOGY

16-21

190854

Provenience: Mato Grosso, Brazil, Aldeia Camararé,
Rio Camararé

Field No.

People or Culture: Nambiquara Indians, kithauhlú band

Object: piqui scoop (for removing piqui, Caryocar
brasiliense, St.Hil.) from boiling water.

Material: split cane

Neg. No.

53

Description: A pliable stick has been bent into a loop. Split cane is woven onto the loop so as to form a scoop. Each piece of cane passes from the handle to the right side of the loop, makes a turn around the stick, crosses over, makes a turn around the stick on the other side, and then goes back toward the first side of the loop on the diagonal, so that the holes in the weave are six-sided. The ends of the stick and the ends of the cane are wrapped to

Dimensions:

(in cm.)

form the handle. 95 X 22

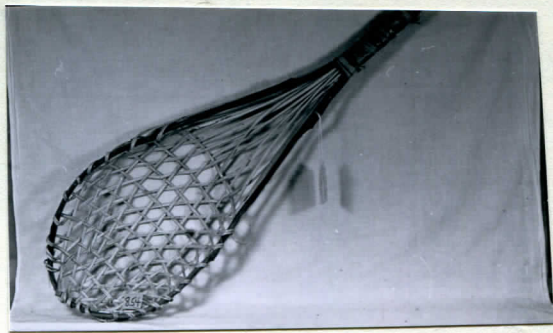
Acc.

3133

Collection:

P. David Price, collector, 1968-1969

REC'D JUL 8 1970



Cat. # 190 854.