

ENT

A

190840

FIELD MUSEUM OF NATURAL HISTORY—ETHNOLOGY

16-21

Field No.

Provenience: Mato Grosso, Brazil, Aldeia Serra Azul,
headwaters of Rio Juina

People or Culture: Nambiquara Indians, halót'ésú band

Object: spindle with cotton string

Material: stick, potsherd, cotton

Description: A potsherd from a site near Serra Azul has been ground into a disk, which has been pierced and hafted on a straight stick. A quantity of cotton was spun with this spindle, and the resultant string was left accumulated along the shaft.

Neg. No.

51

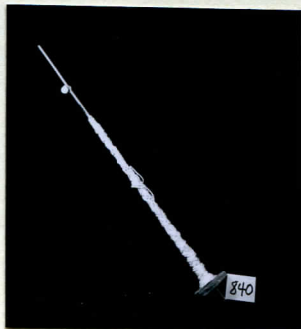
Dimensions: length: 30.6; whorl diam: 3.9
(in cm.)

Acc.

3133

Collection: P. David Price, collector, 1968-1969

REC JUL 8 1970



Cat # 190 840.