

ENT

FIELD MUSEUM OF NATURAL HISTORY—ETHNOLOGY

24-24

222152

Field No.

KA-332

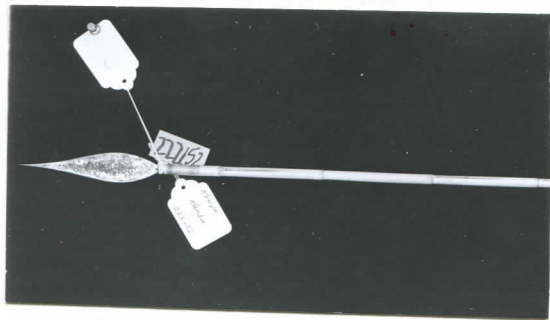
Provenience: Africa Kenya**People or Culture:** Kamba**Object:** Arrow (kilunda)**Material:** Bamboo, iron, feathers, cow ligament, paint**Description:** Game-killing arrow is made of bamboo (mwangi) and has a hand-made flat tip ending in a long sharp point. The end is split for insertion of the point and is bound with chewed cow ligament. Fletching is vulture feathers bound with cow ligament. A red paint design identifies the owner.

Neg. No.

Dimensions: Length 65 cm. Tip width 3 cm. Tip length 14cm
(in cm.)

Acc. 3260

Collection: Field Museum of Natural History Purchase 1974
Collected by Mrs. Ann Prewitt 1972



Catalogue # 222152.