

A

FIELD MUSEUM OF NATURAL HISTORY

20-23

209942

Provenance: **N. AFRICA, ALGERIA****ENT**

LOCATION:

People: Kabyles

Hall

Description:

Case 22

Room Gem

Heavy necklace consisting of groups of red coral beads alternating with pear-shaped silver ornaments. Two of the links are round silver coins. The main pendant (with three small pendants at its base) is a small flat, silver and enamel box, with a large, round, red stone in the middle of one side.

Field No.

Neg. No.

90362

Roll 1

Frame 20

Length 38 cms. when folded double.

Presented by Stanley Field, E. E. Ayer, W. F. Blair, G. Manierre,
G. F. Porter, R. T. Crane, Jr.

Collection: 1910, E. E. Ayer

Dim.:

Acc. 1104

INDEX GUIDES

1.

2.

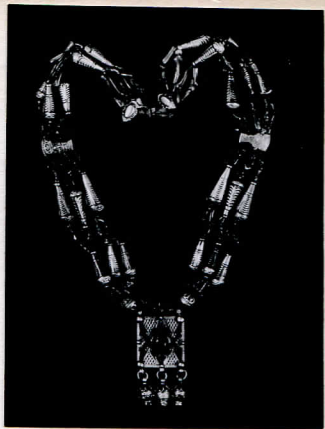
3.

4.

5.

6.

7.



Catalogue # 209942.