

194594

Field No.

Provenience: West Africa, Nigeria, Abuja**People or Culture:** Gwari**Object:** water pot**Material:** stoneware

Description: Made at the Field Museum by a famous Nigerian potter, Mrs. Ladi Kwali, May 12, 1972, using traditional African methods--clay is scooped out and sausages of clay are added to build up pot. Shaped with a gourd tool. A twisted cotton roulette used on top and sides. Decorated around body with traditional Gwari designs--incised animals, birds, snakes, and insects, filled in with punctated diagonal lines. Light brown color. Fired at Art Institute of Chicago by James Lorio.

Dimensions:

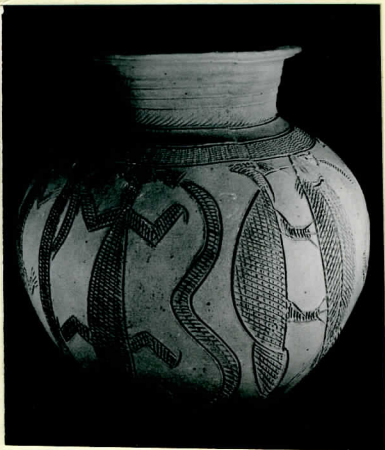
(in cm.) diameter 33.6; height 37.5

Neg. No.

81

Acc. 3189

Collection: Gift of Field Museum Staff Members, May 17, 1972. See accession jacket for list of donors.



Catalogue # 194594.