

ENT A

FIELD MUSEUM OF NATURAL HISTORY—ETHNOLOGY 21-15

221721
a,b,c,d,e,

Field No.

Provenience: Nigeria: Oyo

People or Culture: Yoruba

Object: set of tools(5) for preparing and decorating calabashes

Material: iron, wood and cloth

Description: a) splayed triangular blade, tang-hafted adze-fashion into club-like handle (b) 1/4-circular blade with rectangular tab on outside of curve and indented point at distal end, tang-hafted into sharply tapered handle (c) lunate blade tang-hafted into cylindrical handle (d) beak-shaped blade at right angle to tang running into tapered handle; juncture wrapped with cloth (e) rhomboidal blade tang-hafted

Neg. No.

38

Dimensions: over (over)
(in cm.)

Acc. 3084

Collection: Received from Mr. Allen Bassing
October 27, 1969.

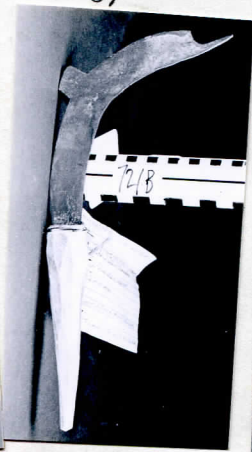
into tapered wooden handle; juncture wrapped with cloth.

Dimensions:

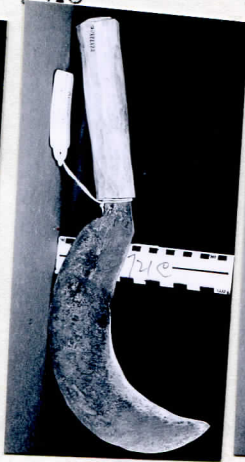
a)	length	23.0	width	11.1
b)		24.4		11.6
c)		33.0		11.0
d)		20.6		6.0
e)		23.6		4.0



A



B



C



D



E