

ENT A

221731

a and b

Field No.

33.

Neg. No.

41

Acc. 3084

FIELD MUSEUM OF NATURAL HISTORY—ETHNOLOGY 21-5

Provenience: Nigeria: Jos

People or Culture: in general use

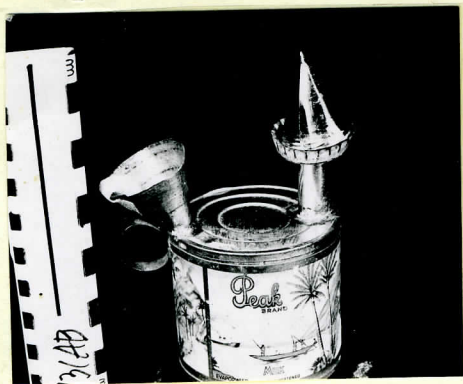
Object: kerosene lamp and lid

Material: tinned iron and non-ferrous foil

Description: (a) evaporated milk can with tube soldered to one side of top and a cone soldered to the other; a bottle cap and a narrower tube are soldered to the top of the tube; a loop for carrying is soldered under the cone. (b) an imperforate cone of foil used to cap the conical spout.

Dimensions: 6.4 diam., 11.0 height  
(in cm.)

Collection: Received from Mr. Allen Bassing  
October 27, 1969.



CAT. # 221731.