

A

FIELD MUSEUM OF NATURAL HISTORY—ETHNOLOGY

22-5

271787

Provenience: Nigeria.

Field No.

People or Culture: Yoruba.

Object: Shrine Box.

Material: Beads, cloth, guord, leather.

Description:

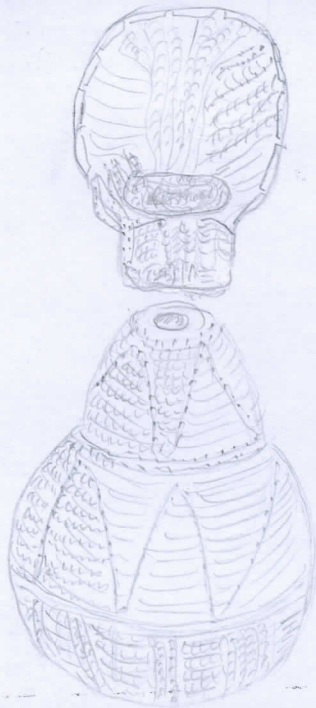
Beaded triangular patten around gourd shape.
Beaded face shape sits on top.

Neg. No.

Dimensions: H: 18cm
(in cm.) L: 6cm

Acc. 4024

Collection: Gift James and Gladys Strain.



DP