

East Berbice-Corentyne & Upper Takutu-Upper Essequibo (Regions 6 and 9), GUYANA 1

Selected Mammals of the Acarai-Corentyne Corridor

Farah Carrasco-Rueda¹, Matt T. Hallett², Arianne-Elise Harris³, Huichang Yang, Alex Stewart⁵, Octavious Hendricks⁴, Wenceslaus Washington⁴, Phillip Suse⁴, Samson Yaimo

¹Field Museum of Natural History, ²University of Florida, ³University of Guyana, ⁴Protected Areas Commission (PAC), ⁵Frankfurt Zoological Society-Guyana

Photos by the authors. Acknowledgments: We thank the Indigenous communities of Masakeñari, Parabara, and Cashew Island (Kasuela), who were key collaborators in the research, as well as our partners, the Guyana Protected Areas Commission, for inviting us to survey the biodiversity of this area to inform future conservation decision-making, and the Centre for the Study of Biological Diversity at the University of Guyana.

© Field Museum (2025) CC BY-NC 4.0. Licensed works are free to use/share/remix with attribution, but commercial use of the original work is not permitted.

[science.fieldmuseum.org/fieldguides]

[1805] version 1 7/2025



The Acarai-Corentyne Corridor is a 1.5 million-hectare expanse of wild forests, creeks, and mountains in southern Guyana. Bounded by two of Guyana’s largest rivers—the Essequibo to the west and the New River to the east—the Corridor stretches 275 km from the highest peaks of the Acarai Mountains in the south to the lowland forests that form the headwaters of the Berbice River in the north. It is one of the least-explored areas of Guyana, notoriously difficult to access from the north due to the imposing waterfalls and treacherous rapids along the Essequibo, Corentyne, and New rivers. While ours was the first comprehensive biodiversity survey to study the area, Indigenous peoples have been exploring, describing, and using these forests for millennia and know them intimately.

This field guide is based on the Field Museum’s November 2024 rapid inventory of the Acarai-Corentyne Corridor. Throughout the corridor robust populations of Guyana’s largest vertebrates and most massive tree species flourish alongside ancient petroglyphs that signal a millennia-old tradition of stewardship by Indigenous peoples.

More comprehensive results from Rapid Inventory 32 are available at <https://www.rapidinventories.fieldmuseum.org/ri-32>.

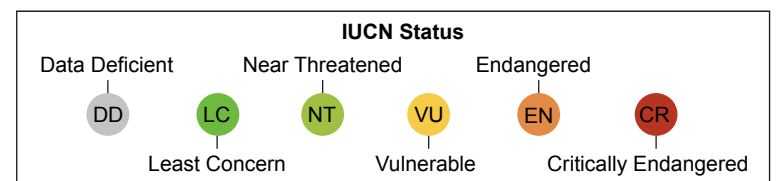


2 Forest view from the Essequibo River

1 Rapid Inventory 32 campsites in the Acarai-Corentyne Corridor

The RI32 Mammals team recorded 83 of the 192 mammal species projected to occur in the corridor (38 medium- and large-bodied species, 17 small mammals, and 28 bats) in >57,000 camera trap photos and videos as well as transect surveys and opportunistic encounters. Frequently encountered white-lipped peccaries (*Tayassu pecari*; photos 66-67) and red-faced black spider monkeys (*Ateles paniscus*; photos 27-29) are essential food sources for local people, and landscape engineers and seed dispersers, respectively. Top predators were also recorded, ranging from the jaguar (*Panthera onca*; photos 52-53) to the woolly false vampire bat (*Chrotopterus auritus*; photo 43).

This field guide contains photos of 39 species, 47% of the species found in the field, and a list of their common names and their names in Waiwai, Wapishana, and Trio languages.



East Berbice-Corentyne & Upper Takutu-Upper Essequibo (Regions 6 and 9), GUYANA 2

Selected Mammals of the Acarai-Corentyne Corridor

Farah Carrasco-Rueda¹, Matt T. Hallett², Arianne-Elise Harris³, Huichang Yang, Alex Stewart⁵, Octavious Hendricks⁴, Wenceslaus Washington⁴, Phillip Suse⁴, Samson Yaimo

¹Field Museum of Natural History, ²University of Florida, ³University of Guyana, ⁴Protected Areas Commission (PAC),

⁵Frankfurt Zoological Society-Guyana

Photos by the authors. Acknowledgments: We thank the Indigenous communities of Masakeñari, Parabara, and Cashew Island (Kasuela), who were key collaborators in the research, as well as our partners, the Guyana Protected Areas Commission, for inviting us to survey the biodiversity of this area to inform future conservation decision-making, and the Centre for the Study of Biological Diversity at the University of Guyana.



© Field Museum (2025) CC BY-NC 4.0. Licensed works are free to use/share/remix with attribution, but commercial use of the original work is not permitted.

[science.fieldmuseum.org/fieldguides]

[1805] version 1 7/2025



3 *Didelphis marsupialis*
DIDELPHIDAE
Common opossum

LC



4 *Didelphis marsupialis*
DIDELPHIDAE
Common opossum

LC



5 *Marmosops* sp.
DIDELPHIDAE
Slender opossum



6 *Philander opossum*
DIDELPHIDAE
Gray four-eyed opossum

LC



7 *Dasypus guianensis*
DASYPODIDAE
Guianan Long-nosed armadillo

LC



8 *Dasypus guianensis*
DASYPODIDAE
Guianan Long-nosed armadillo

LC



9 *Dasypus kapleri*
DASYPODIDAE
Great long-nosed armadillo

LC



10 *Dasypus kapleri*
DASYPODIDAE
Great long-nosed armadillo

LC



11 *Priodontes maximus*
CHLAMYPHORIDAE
Giant armadillo

VU

Selected Mammals of the Acarai-Corentyne Corridor

Farah Carrasco-Rueda¹, Matt T. Hallett², Arianne-Elise Harris³, Huichang Yang, Alex Stewart⁵, Octavious Hendricks⁴, Wenceslaus Washington⁴, Phillip Suse⁴, Samson Yaimo

¹Field Museum of Natural History, ²University of Florida, ³University of Guyana, ⁴Protected Areas Commission (PAC),

⁵Frankfurt Zoological Society-Guyana

Photos by the authors. Acknowledgments: We thank the Indigenous communities of Masakeñari, Parabara, and Cashew Island (Kasuela), who were key collaborators in the research, as well as our partners, the Guyana Protected Areas Commission, for inviting us to survey the biodiversity of this area to inform future conservation decision-making, and the Centre for the Study of Biological Diversity at the University of Guyana.



© Field Museum (2025) CC BY-NC 4.0. Licensed works are free to use/share/remix with attribution, but commercial use of the original work is not permitted.

[science.fieldmuseum.org/fieldguides]

[1805] version 1 7/2025



12 *Priodontes maximus*
CHLAMYPHORIDAE
Giant armadillo

VU



13 *Bradypus tridactylus*
BRADYPODIDAE
Pale-throated three-toed sloth

LC



14 *Bradypus tridactylus*
BRADYPODIDAE
Pale-throated three-toed sloth

LC



15 *Myrmecophaga tridactyla*
MYRMECOPHAGIDAE
Giant anteater

VU



16 *Myrmecophaga tridactyla* (adult, juvenile)
MYRMECOPHAGIDAE
Giant anteater

VU



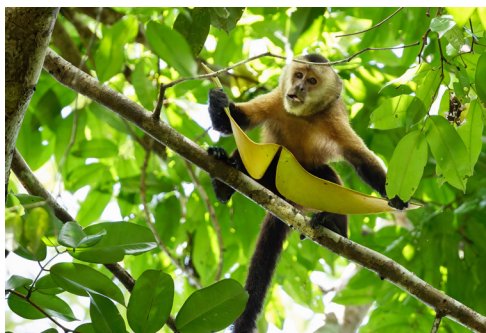
17 *Sapajus apella*
CEBIDAE
Brown capuchin

LC



18 *Sapajus apella*
CEBIDAE
Brown capuchin

LC



19 *Cebus castaneus*
CEBIDAE
Wedge-capped capuchin

LC



20 *Cebus castaneus*
CEBIDAE
Wedge-capped capuchin

LC

Selected Mammals of the Acarai-Corentyne Corridor

Farah Carrasco-Rueda¹, Matt T. Hallett², Arianne-Elise Harris³, Huichang Yang, Alex Stewart⁵, Octavious Hendricks⁴, Wenceslaus Washington⁴, Phillip Suse⁴, Samson Yaimo

¹Field Museum of Natural History, ²University of Florida, ³University of Guyana, ⁴Protected Areas Commission (PAC),

⁵Frankfurt Zoological Society-Guyana

Photos by the authors. Acknowledgments: We thank the Indigenous communities of Masakeñari, Parabara, and Cashew Island (Kasuela), who were key collaborators in the research, as well as our partners, the Guyana Protected Areas Commission, for inviting us to survey the biodiversity of this area to inform future conservation decision-making, and the Centre for the Study of Biological Diversity at the University of Guyana.



© Field Museum (2025) CC BY-NC 4.0. Licensed works are free to use/share/remix with attribution, but commercial use of the original work is not permitted.

[science.fieldmuseum.org/fieldguides]

[1805] version 1 7/2025



21 *Saimiri sciureus*
CEBIDAE
Guianan squirrel monkey

LC



22 *Saimiri sciureus*
CEBIDAE
Guianan squirrel monkey

LC



23 *Chiropotes sagulatus*
PITHECIIDAE
Reddish-brown bearded saki

LC



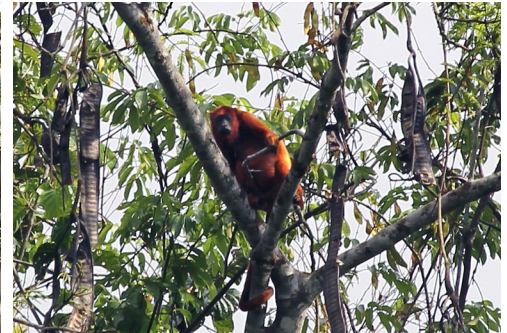
24 *Chiropotes sagulatus*
PITHECIIDAE
Reddish-brown bearded saki

LC



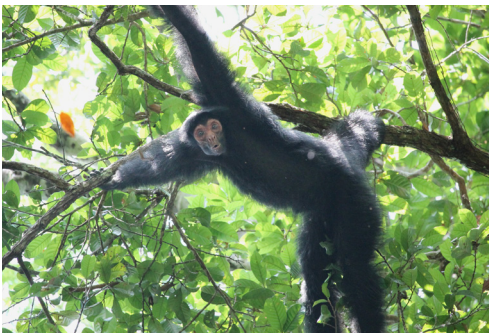
25 *Alouatta macconnelli*
ATELIDAE
Red howler monkey

LC



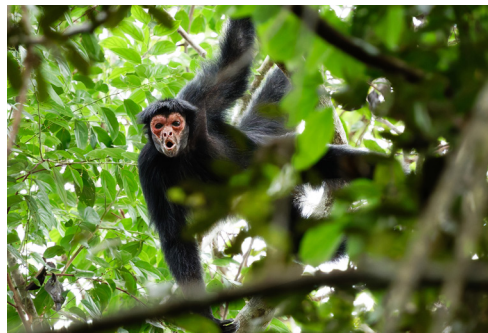
26 *Alouatta macconnelli*
ATELIDAE
Red howler monkey

LC



27 *Ateles paniscus*
ATELIDAE
Red-faced black spider monkey

VU



28 *Ateles paniscus*
ATELIDAE
Red-faced black spider monkey

VU



29 *Ateles paniscus* (adult, juvenile)
ATELIDAE
Red-faced black spider monkey

VU

East Berbice-Corentyne & Upper Takutu-Upper Essequibo (Regions 6 and 9), GUYANA 5

Selected Mammals of the Acarai-Corentyne Corridor

Farah Carrasco-Rueda¹, Matt T. Hallett², Arianne-Elise Harris³, Huichang Yang, Alex Stewart⁵, Octavious Hendricks⁴, Wenceslaus Washington⁴, Phillip Suse⁴, Samson Yaimo

¹Field Museum of Natural History, ²University of Florida, ³University of Guyana, ⁴Protected Areas Commission (PAC),
⁵Frankfurt Zoological Society-Guyana

Photos by the authors. Acknowledgments: We thank the Indigenous communities of Masakeñari, Parabara, and Cashew Island (Kasuela), who were key collaborators in the research, as well as our partners, the Guyana Protected Areas Commission, for inviting us to survey the biodiversity of this area to inform future conservation decision-making, and the Centre for the Study of Biological Diversity at the University of Guyana.



© Field Museum (2025) CC BY-NC 4.0. Licensed works are free to use/share/remix with attribution, but commercial use of the original work is not permitted.

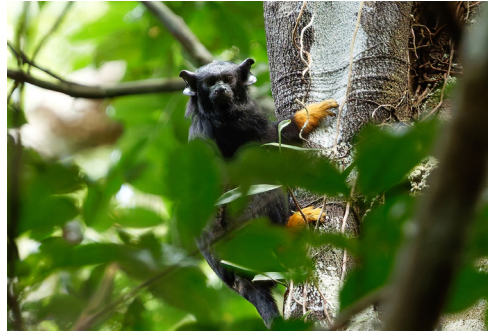
[science.fieldmuseum.org/fieldguides]

[1805] version 1 7/2025



30 *Saguinus midas*
CALLITRICHIDAE
Golden-handed tamarin

LC



31 *Saguinus midas*
CALLITRICHIDAE
Golden-handed tamarin

LC



32 *Sciurus aestuans*
SCIURIDAE
Guianan squirrel

LC



33 *Sciurus aestuans*
SCIURIDAE
Guianan squirrel

LC



34 *Hydrochoerus hydrochaeris*
CAVIIDAE
Capybara

LC



35 *Hydrochoerus hydrochaeris*
CAVIIDAE
Capybara

LC



36 *Dasyprocta leporina*
DASYPROCTIDAE
Red-rumped agouti

LC



37 *Myoprocta acouchy*
DASYPROCTIDAE
Red acouchy

LC



38 *Myoprocta acouchy* (adult, juvenile)
DASYPROCTIDAE
Red acouchy

LC

Selected Mammals of the Acarai-Corentyne Corridor

Farah Carrasco-Rueda¹, Matt T. Hallett², Arianne-Elise Harris³, Huichang Yang, Alex Stewart⁵, Octavious Hendricks⁴, Wenceslaus Washington⁴, Phillip Suse⁴, Samson Yaimo

¹Field Museum of Natural History, ²University of Florida, ³University of Guyana, ⁴Protected Areas Commission (PAC),

⁵Frankfurt Zoological Society-Guyana

Photos by the authors. Acknowledgments: We thank the Indigenous communities of Masakeñari, Parabara, and Cashew Island (Kasuela), who were key collaborators in the research, as well as our partners, the Guyana Protected Areas Commission, for inviting us to survey the biodiversity of this area to inform future conservation decision-making, and the Centre for the Study of Biological Diversity at the University of Guyana.



© Field Museum (2025) CC BY-NC 4.0. Licensed works are free to use/share/remix with attribution, but commercial use of the original work is not permitted.

[science.fieldmuseum.org/fieldguides]

[1805] version 1 7/2025



39 *Cuniculus paca*
CUNICULIDAE
Lowland paca

LC



40 *Cuniculus paca*
CUNICULIDAE
Lowland paca

LC



41 *Proechimys* sp.
ECHIMYIDAE
Cuvier's spiny rat or Guianan spiny rat



42 *Proechimys* sp.
ECHIMYIDAE
Cuvier's spiny rat or Guianan spiny rat



43 *Chrotopterus auritus*
PHYLLOSTOMIDAE
Woolly false vampire bat

LC



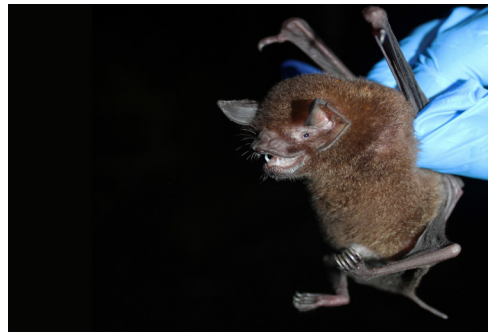
44 *Lophostoma silvicola*
PHYLLOSTOMIDAE
White-throated round-eared bat

LC



45 *Phyllostomus elongatus*
PHYLLOSTOMIDAE
Lesser spear-nosed bat

LC



46 *Pteronotus parnellii*
MORMOOPIDAE
Parnell's mustached bat

LC



47 *Leopardus pardalis*
FELIDAE
Ocelot

LC


Selected Mammals of the Acarai-Corentyne Corridor

Farah Carrasco-Rueda¹, Matt T. Hallett², Arianne-Elise Harris³, Huichang Yang, Alex Stewart⁵, Octavious Hendricks⁴, Wenceslaus Washington⁴, Phillip Suse⁴, Samson Yaimo

¹Field Museum of Natural History, ²University of Florida, ³University of Guyana, ⁴Protected Areas Commission (PAC),

⁵Frankfurt Zoological Society-Guyana

Photos by the authors. Acknowledgments: We thank the Indigenous communities of Masakeñari, Parabara, and Cashew Island (Kasuela), who were key collaborators in the research, as well as our partners, the Guyana Protected Areas Commission, for inviting us to survey the biodiversity of this area to inform future conservation decision-making, and the Centre for the Study of Biological Diversity at the University of Guyana.

 © Field Museum (2025) CC BY-NC 4.0. Licensed works are free to use/share/remix with attribution, but commercial use of the original work is not permitted.

[science.fieldmuseum.org/fieldguides]

[1805] version 1 7/2025



48 *Leopardus wiedii*
FELIDAE
Margay

NT



49 *Puma concolor*
FELIDAE
Puma

LC



50 *Puma concolor* (juvenile)
FELIDAE
Puma

LC



51 *Herpailurus yagouaroundi*
FELIDAE
Jaguarundi

LC



52 *Panthera onca*
FELIDAE
Jaguar

NT



53 *Panthera onca*
FELIDAE
Jaguar

NT



54 *Pteronura brasiliensis*
MUSTELIDAE
Giant otter

EN



55 *Pteronura brasiliensis*
MUSTELIDAE
Giant otter

EN



56 *Eira barbara*
MUSTELIDAE
Tayra

LC

Selected Mammals of the Acarai-Corentyne Corridor

Farah Carrasco-Rueda¹, Matt T. Hallett², Arianne-Elise Harris³, Huichang Yang, Alex Stewart⁵, Octavious Hendricks⁴, Wenceslaus Washington⁴, Phillip Suse⁴, Samson Yaimo

¹Field Museum of Natural History, ²University of Florida, ³University of Guyana, ⁴Protected Areas Commission (PAC),

⁵Frankfurt Zoological Society-Guyana

Photos by the authors. Acknowledgments: We thank the Indigenous communities of Masakeñari, Parabara, and Cashew Island (Kasuela), who were key collaborators in the research, as well as our partners, the Guyana Protected Areas Commission, for inviting us to survey the biodiversity of this area to inform future conservation decision-making, and the Centre for the Study of Biological Diversity at the University of Guyana.



© Field Museum (2025) CC BY-NC 4.0. Licensed works are free to use/share/remix with attribution, but commercial use of the original work is not permitted.

[science.fieldmuseum.org/fieldguides]

[1805] version 1 7/2025



57 *Eira barbara* (leucistic)
MUSTELIDAE
Tayra

LC



58 *Nasua nasua*
PROCYONIDAE
South American coati

LC



59 *Nasua nasua*
PROCYONIDAE
South American coati

LC



60 *Procyon cancrivorus*
PROCYONIDAE
Crab-eating raccoon

LC



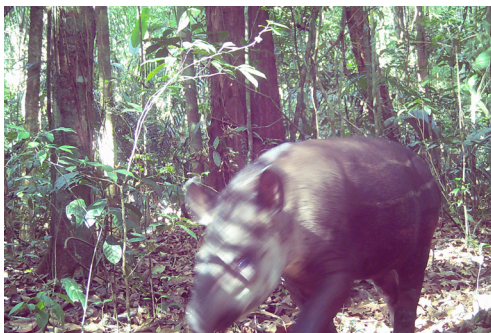
61 *Procyon cancrivorus*
PROCYONIDAE
Crab-eating raccoon

LC



62 *Tapirus terrestris*
TAPIRIDAE
Lowland tapir, Brazilian tapir

VU



63 *Tapirus terrestris* (juvenile)
TAPIRIDAE
Lowland tapir, Brazilian tapir

VU



64 *Dicotyles tajacu*
TAYASSUIDAE
Collared peccary

LC



65 *Dicotyles tajacu*
TAYASSUIDAE
Collared peccary

LC

Selected Mammals of the Acarai-Corentyne Corridor

Farah Carrasco-Rueda¹, Matt T. Hallett², Arianne-Elise Harris³, Huichang Yang, Alex Stewart⁵, Octavious Hendricks⁴, Wenceslaus Washington⁴, Phillip Suse⁴, Samson Yaimo

¹Field Museum of Natural History, ²University of Florida, ³University of Guyana, ⁴Protected Areas Commission (PAC),

⁵Frankfurt Zoological Society-Guyana

Photos by the authors. Acknowledgments: We thank the Indigenous communities of Masakeñari, Parabara, and Cashew Island (Kasuela), who were key collaborators in the research, as well as our partners, the Guyana Protected Areas Commission, for inviting us to survey the biodiversity of this area to inform future conservation decision-making, and the Centre for the Study of Biological Diversity at the University of Guyana.



© Field Museum (2025) CC BY-NC 4.0. Licensed works are free to use/share/remix with attribution, but commercial use of the original work is not permitted.

[science.fieldmuseum.org/fieldguides]

[1805] version 1 7/2025



66

Tayassu pecari
TAYASSUIDAE
White-lipped peccary

VU



67

Tayassu pecari (adult, juvenile)
TAYASSUIDAE
White-lipped peccary

VU



68

Mazama americana
CERVIDAE
Red brocket deer

DD



69

Mazama americana (juvenile)
CERVIDAE
Red brocket deer

DD



70

Mazama nemorivaga
CERVIDAE
Amazonian brown brocket deer

LC



71

Mazama nemorivaga (adult, juvenile)
CERVIDAE
Amazonian brown brocket deer

LC

Selected Mammals of the Acarai-Corentyne Corridor

Farah Carrasco-Rueda¹, Matt T. Hallett², Arianne-Elise Harris³, Huichang Yang, Alex Stewart⁵, Octavious Hendricks⁴, Wenceslaus Washington⁴, Phillip Suse⁴, Samson Yaimo

¹Field Museum of Natural History, ²University of Florida, ³University of Guyana, ⁴Protected Areas Commission (PAC),

⁵Frankfurt Zoological Society-Guyana

Photos by the authors. Acknowledgments: We thank the Indigenous communities of Masakeñari, Parabara, and Cashew Island (Kasuela), who were key collaborators in the research, as well as our partners, the Guyana Protected Areas Commission, for inviting us to survey the biodiversity of this area to inform future conservation decision-making, and the Centre for the Study of Biological Diversity at the University of Guyana.



© Field Museum (2025) CC BY-NC 4.0. Licensed works are free to use/share/remix with attribution, but commercial use of the original work is not permitted.

[science.fieldmuseum.org/fieldguides]

[1805] version 1 7/2025

Photo number	Species name	English names	Local names in Indigenous languages		
			Waiwai	Wapishana	Trio
3-4	<i>Didelphis marsupialis</i>	Common opossum	Yawari	Yawari	Aware
5	<i>Marmosops</i> sp.	Slender opossum			
6	<i>Philander opossum</i>	Gray four-eyed opossum			
7-8	<i>Dasypus guianensis</i>	Guianan Long-nosed armadillo	Kapayo	Dawudiu	Mocaimé
9-10	<i>Dasypus kappleri</i>	Great long-nosed armadillo		Witt	Kapai
11-12	<i>Priodontes maximus</i>	Giant armadillo	Murura	Maroro	
13-14	<i>Bradypus tridactylus</i>	Pale-throated three-toed sloth	Xori	Aau	Wirinai
15-16	<i>Myrmecophaga tridactyla</i>	Giant anteater	Amaci	Tamanuwa	Masiwi
17-18	<i>Sapajus apella</i>	Brown capuchin	Meekú	Powat	Taripi
19-20	<i>Cebus olivaceus</i>	Wedge-capped capuchin	Warakarú	Owaa'o	Akau
21-22	<i>Saimiri sciureus</i>	Guianan squirrel monkey	Cakarma	Chima	Akariman
23-24	<i>Chiropotes sagulatus</i>	Reddish-brown bearded saki	Uxaa	Wishi	Isoimë
25-26	<i>Alouatta macconnelli</i>	Red howler monkey	Xîpîrî	Suburu	Alawata
27-29	<i>Ateles paniscus</i>	Red-faced black spider monkey	Porotó	Romi	Arimi
30-31	<i>Saguinus midas</i>	Golden-handed tamarin	Wiicaru	Wicharu	Makui
32-33	<i>Sciurus aestuans</i>	Guianan squirrel	Awarku	Wichawaro	Meri
34-35	<i>Hydrochoerus hydrochaeris</i>	Capybara	Yîwîrî	Kashu	Iwiri
36	<i>Dasyprocta leporina</i>	Red-rumped agouti	Akri	Sokoro	Akuri
37-38	<i>Myoprocta acouchy</i>	Red acouchy	Paxki	Adori	Pasinore
39-40	<i>Cuniculus paca</i>	Lowland paca	Wiira	Oran	Kurimau
41-42	<i>Proechimys</i> sp.	Cuvier's spiny rat or Guianan spiny rat	Cawa, mokuku, mînp	Korii	
43	<i>Chrotopterus auritus</i>	Woolly false vampire bat	Rere	Izainik	Neere
44	<i>Lophostoma silvicola</i>	White-throated round-eared bat	Rere	Baraksaran	Neere
45	<i>Phyllostomus elongatus</i>	Lesser spear-nosed bat	Rere	Tamarío	Neere

Selected Mammals of the Acarai-Corentyne Corridor

Farah Carrasco-Rueda¹, Matt T. Hallett², Arianne-Elise Harris³, Huichang Yang, Alex Stewart⁵, Octavious Hendricks⁴, Wenceslaus Washington⁴, Phillip Suse⁴, Samson Yaimo

¹Field Museum of Natural History, ²University of Florida, ³University of Guyana, ⁴Protected Areas Commission (PAC),

⁵Frankfurt Zoological Society-Guyana

Photos by the authors. Acknowledgments: We thank the Indigenous communities of Masakeñari, Parabara, and Cashew Island (Kasuela), who were key collaborators in the research, as well as our partners, the Guyana Protected Areas Commission, for inviting us to survey the biodiversity of this area to inform future conservation decision-making, and the Centre for the Study of Biological Diversity at the University of Guyana.



© Field Museum (2025) CC BY-NC 4.0. Licensed works are free to use/share/remix with attribution, but commercial use of the original work is not permitted.

[science.fieldmuseum.org/fieldguides]

[1805] version 1 7/2025

Photo number	Species name	English names	Local names in Indigenous languages		
			Waiwai	Wapishana	Trio
46	<i>Pteronotus parnellii</i>	Parnell's mustached bat	Rere	Tamarío	Neere
47	<i>Leopardus pardalis</i>	Ocelot	Irikwa		Tokorori
48	<i>Leopardus wiedii</i>	Margay	Sosoruchi	Kosowai	
49-50	<i>Puma concolor</i>	Puma	Kosowarai	Koshardin	Alawatara
51	<i>Herpailurus yagouaroundi</i>	Jaguarundi	Woroko	Sokorodin	
52-53	<i>Panthera onca</i>	Jaguar	Kamara	Baudukoro	Moono kaikui
54-55	<i>Pteronura brasiliensis</i>	Giant otter	Wayawayaya	Saro	Yawi
56-57	<i>Eira barbara</i>	Tayra	Winayko	Niniro	Warimë
58-59	<i>Nasua nasua</i>	South American coati	Xoowu	Kowachi	Seu
60-61	<i>Procyon cancrivorus</i>	Crab-eating raccoon		Kowachiidin	
62-63	<i>Tapirus terrestris</i>	Lowland tapir, Brazilian tapir	Yaipi	Kodoi	Poi
64-65	<i>Dicotyles tajacu</i>	Collared peccary	Pakra	Bakuku	Pakira
66-67	<i>Tayassu pecari</i>	White-lipped peccary	Poniko	Bichi	Ponjeke
68-69	<i>Mazama americana</i>	Red brocket deer	Koso	Koshara	Wikapau
70-71	<i>Mazama nemorivaga</i>	Amazonian brown brocket deer	Pixkaru	Sowai	