

274507

ENT

2616

FC. 2992

51-23

Catalogue No.

Accession No.

Field Catalogue No.

Negative No.

Sub. Ind. No.

General Provenience: Polynesia Tonga

Where collected:

Tribe:

Where made:

People: Tongan

Attribution:

Culture:

Brief description: Polynesia Tonga

Throwing Club

Detailed description: Missile club of wood; massive; handle is carved on grip and splayed distal end; proximal end has deep cavity and is perforated at the edge; punctate marks extend from area directly above grip to distal end of dome on a patterned knob; 12 circular depressions at distal end of

See reverse

DIMENSIONS (in cm.): handle and 4 near top of grip.

length: 44.1

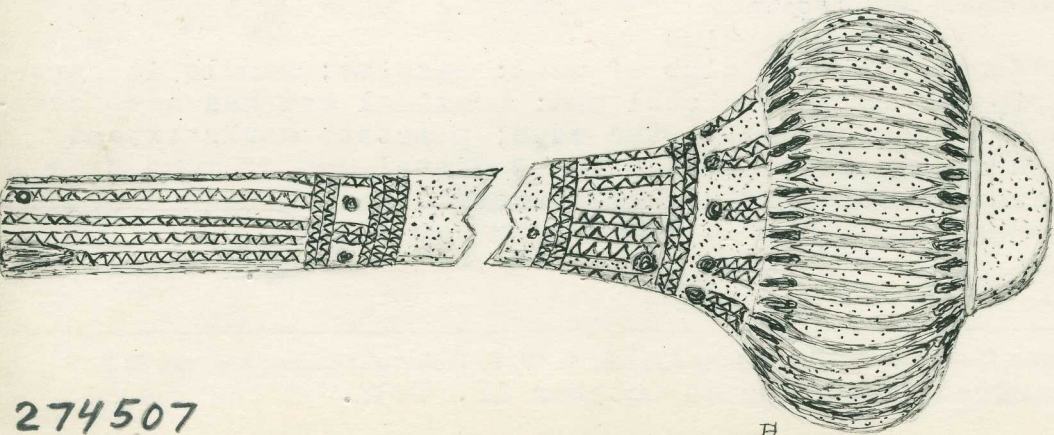
height:

diameter: 14.1 (head)

width:

circumference:

Fuller Collection: Purchased from Captain A. W. F. Fuller of London, England, in 1958
Acquired by Fuller on October 12, 1937.



274507