

The genus *Cryptanthus* (Bromeliaceae) endemic genus to Brazil

Débora Maria Cavalcanti Ferreira & Rafael Batista Louzada
Universidade Federal de Pernambuco

Photos by the authors, except where indicated (Álvaro Nepomuceno - AN, Erton Mendonça - EM, Geyner Alves - GA, Jefferson Maciel - JM, Lukas Daneu - LD, Rayssa Valentin - RV, Ricardo Pontes - RP). Produced by Débora Maria Cavalcanti Ferreira [deboracavalcantif@hotmail.com] with the assistance of Juliana do Brasil, and Rayane Ribeiro, Field Museum. Support: Brazilian National Council for Scientific and Technological Development - CNPq.

 CC0. This work is dedicated to the public domain. [fieldguides.fieldmuseum.org] [1686] version 1 11/2024



1 *Cryptanthus alagoanus*



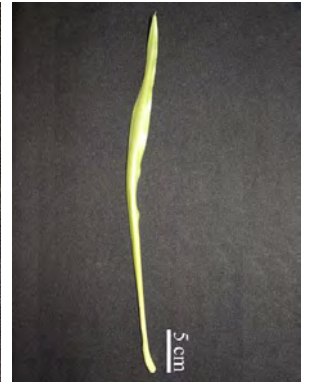
2 *Cryptanthus alagoanus*



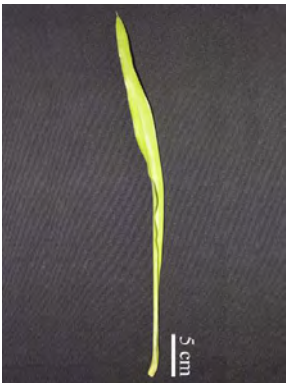
3 *Cryptanthus alagoanus*



4 *Cryptanthus alagoanus*



5 *Cryptanthus alagoanus*



6 *Cryptanthus alagoanus*



7 *Cryptanthus alagoanus*



8 *Cryptanthus alagoanus*
Lateral flower cluster



9 *Cryptanthus alagoanus*



10 *Cryptanthus alagoanus*
Staminate flower



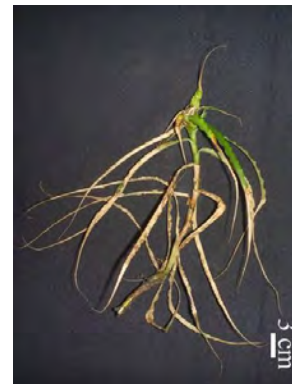
11 *Cryptanthus alagoanus*



12 *Cryptanthus alagoanus*
Perfect flower



13 *Cryptanthus apiculatantherus*



14 *Cryptanthus apiculatantherus*




15 *Cryptanthus apiculatantherus*

EM

The genus *Cryptanthus* (Bromeliaceae) endemic genus to Brazil

Débora Maria Cavalcanti Ferreira & Rafael Batista Louzada
Universidade Federal de Pernambuco

Photos by the authors, except where indicated (Álvaro Nepomuceno - AN, Erton Mendonça - EM, Geyner Alves - GA, Jefferson Maciel - JM, Lukas Daneu - LD, Rayssa Valentin - RV, Ricardo Pontes - RP). Produced by Débora Maria Cavalcanti Ferreira [deboracavalcantif@hotmail.com] with the assistance of Juliana do Brasil, and Rayane Ribeiro, Field Museum. Support: Brazilian National Council for Scientific and Technological Development - CNPq.

 CC0. This work is dedicated to the public domain.

[fieldguides.fieldmuseum.org] [1686] version 1 11/2024



16 *Cryptanthus apiculatantherus*



17 *Cryptanthus apiculatantherus*



18 *Cryptanthus apiculatantherus*



19 *Cryptanthus apiculatantherus*



20 *Cryptanthus apiculatantherus*
Lateral flower cluster



21 *Cryptanthus apiculatantherus*



22 *Cryptanthus apiculatantherus*
Staminate flower



23 *Cryptanthus apiculatantherus*



24 *Cryptanthus apiculatantherus*
Perfect flower



25 *Cryptanthus apiculatantherus*



26 *Cryptanthus apiculatantherus*



27 *Cryptanthus bahianus*



28 *Cryptanthus bahianus*



29 *Cryptanthus bahianus*



30 *Cryptanthus bahianus*

EM

JM

The genus *Cryptanthus* (Bromeliaceae) endemic genus to Brazil

Débora Maria Cavalcanti Ferreira & Rafael Batista Louzada
Universidade Federal de Pernambuco

Photos by the authors, except where indicated (Álvaro Nepomuceno - AN, Erton Mendonça - EM, Geyner Alves - GA, Jefferson Maciel - JM, Lukas Daneu - LD, Rayssa Valentin - RV, Ricardo Pontes - RP). Produced by Débora Maria Cavalcanti Ferreira [deboracavalcantif@hotmail.com] with the assistance of Juliana do Brasil, and Rayane Ribeiro, Field Museum. Support: Brazilian National Council for Scientific and Technological Development - CNPq.



CC0. This work is dedicated to the public domain.

[fieldguides.fieldmuseum.org] [1686] version 1 11/2024



31 *Cryptanthus bahianus*



32 *Cryptanthus bahianus*



33 *Cryptanthus bahianus*



34 *Cryptanthus bahianus*



35 *Cryptanthus bahianus*
Apical flower cluster



36 *Cryptanthus bahianus*
Lateral flower cluster



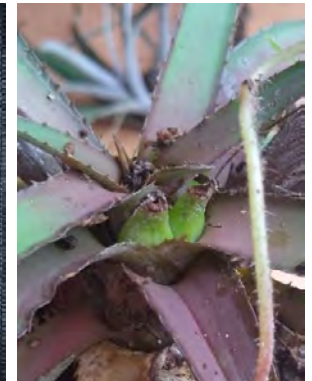
37 *Cryptanthus bahianus*



38 *Cryptanthus bahianus*
Staminate flower



39 *Cryptanthus bahianus*
Perfect flower

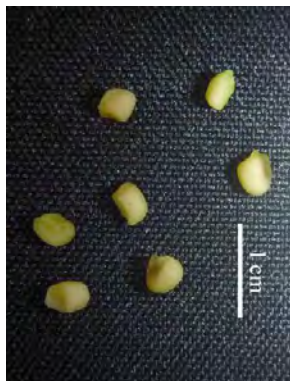


40 *Cryptanthus bahianus*

EM



41 *Cryptanthus bahianus*



42 *Cryptanthus bahianus*



43 *Cryptanthus beuckeri*



44 *Cryptanthus beuckeri*



45 *Cryptanthus beuckeri*

The genus *Cryptanthus* (Bromeliaceae) endemic genus to Brazil

Débora Maria Cavalcanti Ferreira & Rafael Batista Louzada
Universidade Federal de Pernambuco

Photos by the authors, except where indicated (Álvaro Nepomuceno - AN, Erton Mendonça - EM, Geyner Alves - GA, Jefferson Maciel - JM, Lukas Daneu - LD, Rayssa Valentin - RV, Ricardo Pontes - RP). Produced by Débora Maria Cavalcanti Ferreira [deboracavalcantif@hotmail.com] with the assistance of Juliana do Brasil, and Rayane Ribeiro, Field Museum. Support: Brazilian National Council for Scientific and Technological Development - CNPq.

 CC0. This work is dedicated to the public domain. [fieldguides.fieldmuseum.org] [1686] version 1 11/2024



46 *Cryptanthus beuckeri*



47 *Cryptanthus boanovensisi*



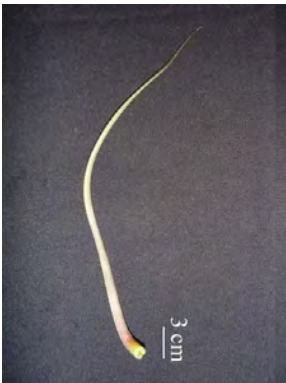
48 *Cryptanthus boanovensisi*



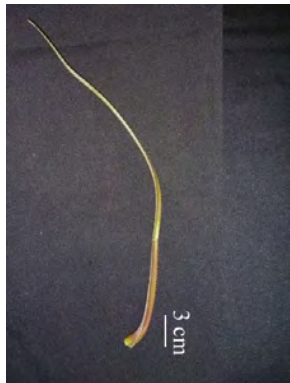
49 *Cryptanthus boanovensisi*



50 *Cryptanthus boanovensisi*



51 *Cryptanthus boanovensisi*



52 *Cryptanthus boanovensisi*



53 *Cryptanthus boanovensisi*



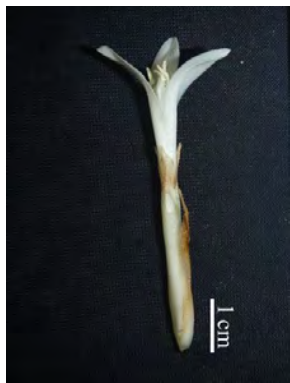
54 *Cryptanthus boanovensisi*
Lateral flower cluster



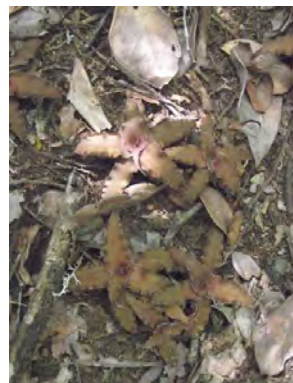
55 *Cryptanthus boanovensisi*
Staminate flower



56 *Cryptanthus boanovensisi*



57 *Cryptanthus boanovensisi*
Perfect flower



58 *Cryptanthus brevibracteatus*



59 *Cryptanthus brevibracteatus*



60 *Cryptanthus brevibracteatus*

The genus *Cryptanthus* (Bromeliaceae) endemic genus to Brazil

Débora Maria Cavalcanti Ferreira & Rafael Batista Louzada
Universidade Federal de Pernambuco

Photos by the authors, except where indicated (Álvaro Nepomuceno - AN, Erton Mendonça - EM, Geyner Alves - GA, Jefferson Maciel - JM, Lukas Daneu - LD, Rayssa Valentin - RV, Ricardo Pontes - RP). Produced by Débora Maria Cavalcanti Ferreira [deboracavalcantif@hotmail.com] with the assistance of Juliana do Brasil, and Rayane Ribeiro, Field Museum. Support: Brazilian National Council for Scientific and Technological Development - CNPq.

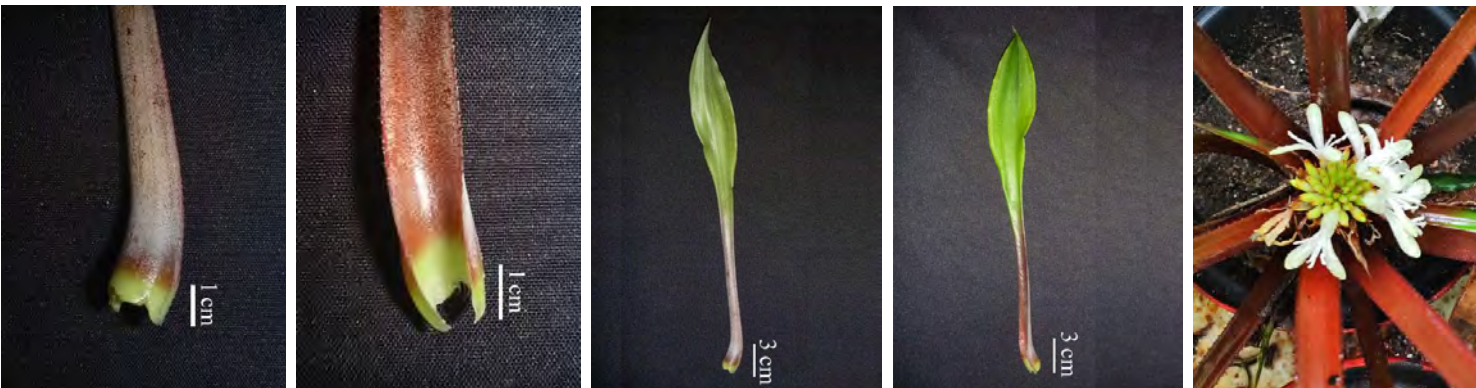
 CC0. This work is dedicated to the public domain. [\[fieldguides.fieldmuseum.org\]](https://fieldguides.fieldmuseum.org) **[1686]** version 1 11/2024



61 *Cryptanthus brevibracteatus* 62 *Cryptanthus brevibracteatus* 63 *Cryptanthus brevibracteatus* 64 *Cryptanthus brevibracteatus* 65 *Cryptanthus brevibracteatus*



66 *Cryptanthus brevibracteatus* Staminate flower 67 *Cryptanthus brevibracteatus* 68 *Cryptanthus brevibracteatus* Perfect flower 69 *Cryptanthus capitellatus* 70 *Cryptanthus capitellatus*



71 *Cryptanthus capitellatus* 72 *Cryptanthus capitellatus* 73 *Cryptanthus capitellatus* 74 *Cryptanthus capitellatus* 75 *Cryptanthus capitellatus*

The genus *Cryptanthus* (Bromeliaceae) endemic genus to Brazil

Débora Maria Cavalcanti Ferreira & Rafael Batista Louzada
Universidade Federal de Pernambuco

Photos by the authors, except where indicated (Álvaro Nepomuceno - AN, Erton Mendonça - EM, Geyner Alves - GA, Jefferson Maciel - JM, Lukas Daneu - LD, Rayssa Valentin - RV, Ricardo Pontes - RP). Produced by Débora Maria Cavalcanti Ferreira [deboracavalcantif@hotmail.com] with the assistance of Juliana do Brasil, and Rayane Ribeiro, Field Museum. Support: Brazilian National Council for Scientific and Technological Development - CNPq.



CC0. This work is dedicated to the public domain.

[fieldguides.fieldmuseum.org] [1686] version 1 11/2024



76 *Cryptanthus cinereus*



77 *Cryptanthus cinereus*



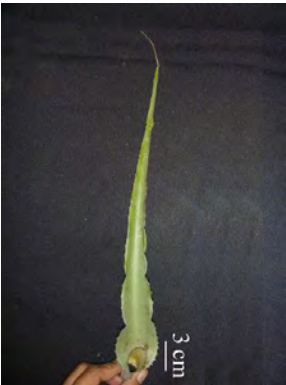
78 *Cryptanthus cinereus*



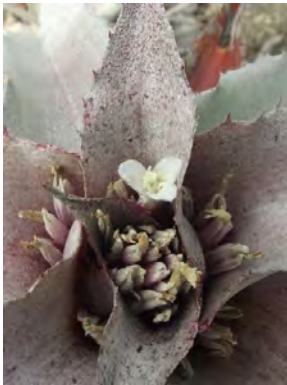
79 *Cryptanthus cinereus*



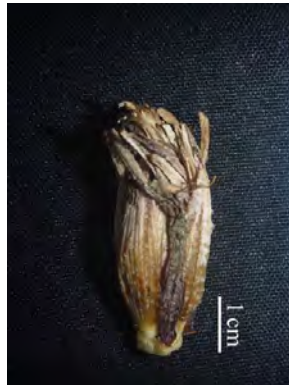
80 *Cryptanthus cinereus*



81 *Cryptanthus cinereus*



82 *Cryptanthus cinereus*



83 *Cryptanthus cinereus*
Apical flower cluster



84 *Cryptanthus cinereus*



85 *Cryptanthus cinereus*
Staminate flower



86 *Cryptanthus cinereus*



87 *Cryptanthus cinereus*



88 *Cryptanthus cinereus*



89 *Cryptanthus crassifolius*




90 *Cryptanthus crassifolius*

The genus *Cryptanthus* (Bromeliaceae) endemic genus to Brazil

Débora Maria Cavalcanti Ferreira & Rafael Batista Louzada
Universidade Federal de Pernambuco

Photos by the authors, except where indicated (Álvaro Nepomuceno - AN, Erton Mendonça - EM, Geyner Alves - GA, Jefferson Maciel - JM, Lukas Daneu - LD, Rayssa Valentin - RV, Ricardo Pontes - RP). Produced by Débora Maria Cavalcanti Ferreira [deboracavalcantif@hotmail.com] with the assistance of Juliana do Brasil, and Rayane Ribeiro, Field Museum. Support: Brazilian National Council for Scientific and Technological Development - CNPq.

 CC0. This work is dedicated to the public domain.

[fieldguides.fieldmuseum.org] [1686] version 1 11/2024



91 *Cryptanthus crassifolius*



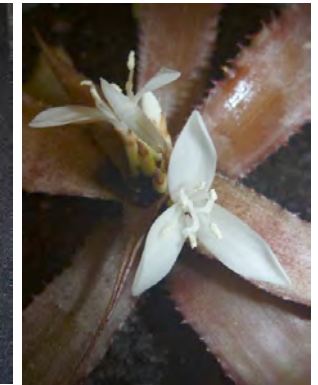
92 *Cryptanthus crassifolius*



93 *Cryptanthus crassifolius*



94 *Cryptanthus crassifolius*



95 *Cryptanthus crassifolius*



96 *Cryptanthus crassifolius*
Lateral flower cluster



97 *Cryptanthus crassifolius*
Staminate flower



98 *Cryptanthus crassifolius*
Perfect flower



99 *Cryptanthus cruzalmensis*



100 *Cryptanthus cruzalmensis*



101 *Cryptanthus cruzalmensis*



102 *Cryptanthus cruzalmensis*



103 *Cryptanthus cruzalmensis*



104 *Cryptanthus diana*



105 *Cryptanthus diana*

The genus *Cryptanthus* (Bromeliaceae) endemic genus to Brazil

Débora Maria Cavalcanti Ferreira & Rafael Batista Louzada
Universidade Federal de Pernambuco

Photos by the authors, except where indicated (Álvaro Nepomuceno - AN, Erton Mendonça - EM, Geyner Alves - GA, Jefferson Maciel - JM, Lukas Daneu - LD, Rayssa Valentin - RV, Ricardo Pontes - RP). Produced by Débora Maria Cavalcanti Ferreira [deboracavalcantif@hotmail.com] with the assistance of Juliana do Brasil, and Rayane Ribeiro, Field Museum. Support: Brazilian National Council for Scientific and Technological Development - CNPq.



CC0. This work is dedicated to the public domain.

[fieldguides.fieldmuseum.org] [1686] version 1 11/2024



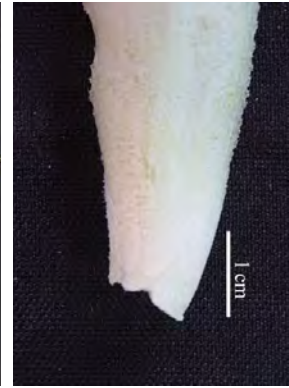
106 *Cryptanthus dianae*



107 *Cryptanthus dianae*



108 *Cryptanthus dianae*



109 *Cryptanthus dianae*



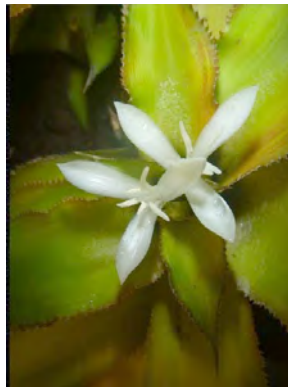
110 *Cryptanthus dianae*



111 *Cryptanthus dianae*



112 *Cryptanthus dianae*



113 *Cryptanthus dianae*



114 *Cryptanthus dianae*
Lateral flower cluster



115 *Cryptanthus dianae*
Staminate flower



116 *Cryptanthus dianae*
Perfect flower



117 *Cryptanthus dianae*



118 *Cryptanthus dorothyae*



119 *Cryptanthus dorothyae*



120 *Cryptanthus dorothyae*

The genus *Cryptanthus* (Bromeliaceae) endemic genus to Brazil

9

Débora Maria Cavalcanti Ferreira & Rafael Batista Louzada
Universidade Federal de Pernambuco

Photos by the authors, except where indicated (Álvaro Nepomuceno - AN, Erton Mendonça - EM, Geyner Alves - GA, Jefferson Maciel - JM, Lukas Daneu - LD, Rayssa Valentin - RV, Ricardo Pontes - RP). Produced by Débora Maria Cavalcanti Ferreira [deboracavalcantif@hotmail.com] with the assistance of Juliana do Brasil, and Rayane Ribeiro, Field Museum. Support: Brazilian National Council for Scientific and Technological Development - CNPq.



CC0. This work is dedicated to the public domain.

[fieldguides.fieldmuseum.org] [1686] version 1 11/2024



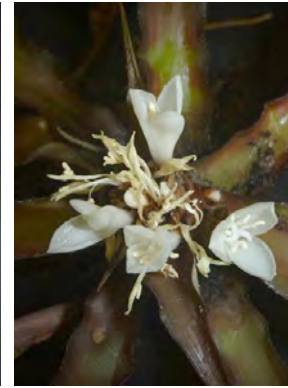
121 *Cryptanthus dorothyae*



122 *Cryptanthus dorothyae*



123 *Cryptanthus dorothyae*



124 *Cryptanthus dorothyae*



125 *Cryptanthus dorothyae*
Apical flower cluster



126 *Cryptanthus dorothyae*
Lateral flower cluster



127 *Cryptanthus dorothyae*



128 *Cryptanthus dorothyae*
Staminate flower



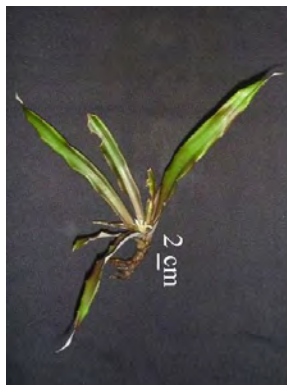
129 *Cryptanthus dorothyae*



130 *Cryptanthus dorothyae*
Perfect flower



131 *Cryptanthus euglossinii*



132 *Cryptanthus euglossinii*



133 *Cryptanthus euglossinii*



134 *Cryptanthus euglossinii*



135 *Cryptanthus euglossinii*

EM

The genus *Cryptanthus* (Bromeliaceae) endemic genus to Brazil

10

Débora Maria Cavalcanti Ferreira & Rafael Batista Louzada
Universidade Federal de Pernambuco

Photos by the authors, except where indicated (Álvaro Nepomuceno - AN, Erton Mendonça - EM, Geyner Alves - GA, Jefferson Maciel - JM, Lukas Daneu - LD, Rayssa Valentin - RV, Ricardo Pontes - RP). Produced by Débora Maria Cavalcanti Ferreira [deboracavalcanti@hotmail.com] with the assistance of Juliana do Brasil, and Rayane Ribeiro, Field Museum. Support: Brazilian National Council for Scientific and Technological Development - CNPq.



CC0. This work is dedicated to the public domain.

[fieldguides.fieldmuseum.org] [1686] version 1 11/2024



136 *Cryptanthus euglossinii*



137 *Cryptanthus euglossinii*



138 *Cryptanthus euglossinii*



139 *Cryptanthus felixii*

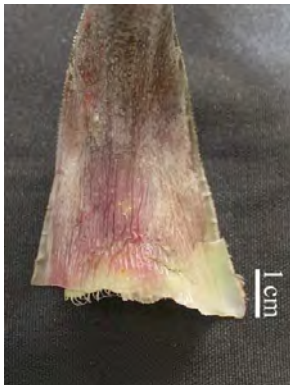


140 *Cryptanthus felixii*

RP



141 *Cryptanthus felixii*



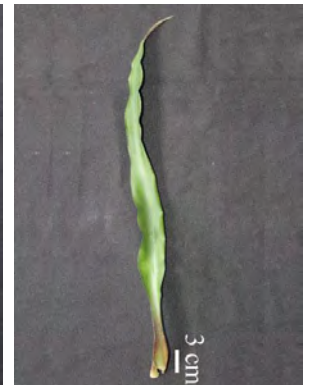
142 *Cryptanthus felixii*



143 *Cryptanthus felixii*



144 *Cryptanthus felixii*



145 *Cryptanthus felixii*



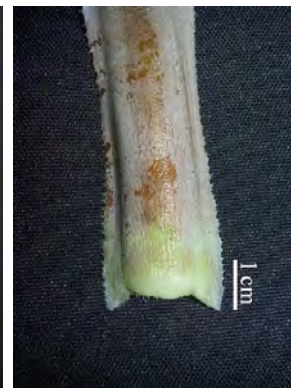
146 *Cryptanthus giganteus*



147 *Cryptanthus guanduensis*



148 *Cryptanthus guanduensis*



149 *Cryptanthus guanduensis*



150 *Cryptanthus guanduensis*

The genus *Cryptanthus* (Bromeliaceae) endemic genus to Brazil

Débora Maria Cavalcanti Ferreira & Rafael Batista Louzada
Universidade Federal de Pernambuco

Photos by the authors, except where indicated (Álvaro Nepomuceno - AN, Erton Mendonça - EM, Geyner Alves - GA, Jefferson Maciel - JM, Lukas Daneu - LD, Rayssa Valentin - RV, Ricardo Pontes - RP). Produced by Débora Maria Cavalcanti Ferreira [deboracavalcantif@hotmail.com] with the assistance of Juliana do Brasil, and Rayane Ribeiro, Field Museum. Support: Brazilian National Council for Scientific and Technological Development - CNPq.

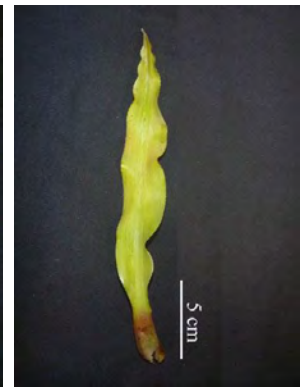
 CC0. This work is dedicated to the public domain. [fieldguides.fieldmuseum.org] [1686] version 1 11/2024



151 *Cryptanthus guanduensis* 152 *Cryptanthus guanduensis* 153 *Cryptanthus guanduensis* 154 *Cryptanthus guanduensis* Apical flower cluster 155 *Cryptanthus guanduensis* Apical flower cluster



156 *Cryptanthus guanduensis* 157 *Cryptanthus guanduensis* Staminate flower 158 *Cryptanthus guanduensis* 159 *Cryptanthus guanduensis* Perfect flower 160 *Cryptanthus pickelii*



161 *Cryptanthus pickelii* 162 *Cryptanthus pickelii* 163 *Cryptanthus pickelii* 164 *Cryptanthus pickelii* 165 *Cryptanthus pickelii*

The genus *Cryptanthus* (Bromeliaceae) endemic genus to Brazil

12

Débora Maria Cavalcanti Ferreira & Rafael Batista Louzada
Universidade Federal de Pernambuco

Photos by the authors, except where indicated (Álvaro Nepomuceno - AN, Erton Mendonça - EM, Geyner Alves - GA, Jefferson Maciel - JM, Lukas Daneu - LD, Rayssa Valentin - RV, Ricardo Pontes - RP). Produced by Débora Maria Cavalcanti Ferreira [deboracavalcantif@hotmail.com] with the assistance of Juliana do Brasil, and Rayane Ribeiro, Field Museum. Support: Brazilian National Council for Scientific and Technological Development - CNPq.



CC0. This work is dedicated to the public domain.

[fieldguides.fieldmuseum.org] [1686] version 1 11/2024



166 *Cryptanthus pickelii*



167 *Cryptanthus pickelii*
Apical flower cluster



168 *Cryptanthus pickelii*
Lateral flower cluster



169 *Cryptanthus pickelii*



170 *Cryptanthus pickelii*
Staminate flower



171 *Cryptanthus pickelii*



172 *Cryptanthus pickelii*
Perfect flower



173 *Cryptanthus pirambuensis*



174 *Cryptanthus pirambuensis*



175 *Cryptanthus pirambuensis*



176 *Cryptanthus pirambuensis*



177 *Cryptanthus pirambuensis*



178 *Cryptanthus pirambuensis*
Apical flower cluster



179 *Cryptanthus pirambuensis*



180 *Cryptanthus pirambuensis*
Staminate flower

The genus *Cryptanthus* (Bromeliaceae) endemic genus to Brazil

Débora Maria Cavalcanti Ferreira & Rafael Batista Louzada
Universidade Federal de Pernambuco

Photos by the authors, except where indicated (Álvaro Nepomuceno - AN, Erton Mendonça - EM, Geyner Alves - GA, Jefferson Maciel - JM, Lukas Daneu - LD, Rayssa Valentin - RV, Ricardo Pontes - RP). Produced by Débora Maria Cavalcanti Ferreira [deboracavalcantif@hotmail.com] with the assistance of Juliana do Brasil, and Rayane Ribeiro, Field Museum. Support: Brazilian National Council for Scientific and Technological Development - CNPq.



CC0. This work is dedicated to the public domain.

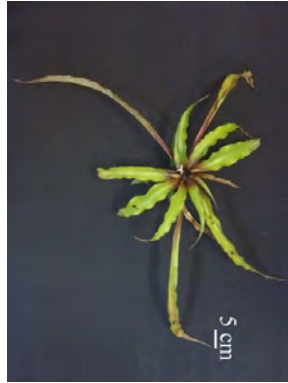
[fieldguides.fieldmuseum.org] [1686] version 1 11/2024



181 *Cryptanthus pirambuensis*
Perfect flower



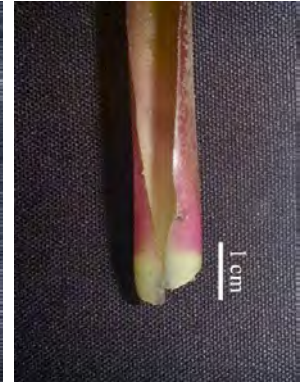
182 *Cryptanthus pseudopetiolatus*



183 *Cryptanthus pseudopetiolatus*



184 *Cryptanthus pseudopetiolatus*



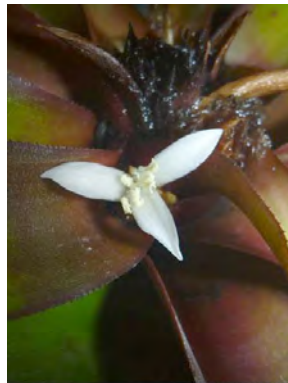
185 *Cryptanthus pseudopetiolatus*



186 *Cryptanthus pseudopetiolatus*



187 *Cryptanthus pseudopetiolatus*



188 *Cryptanthus pseudopetiolatus*



189 *Cryptanthus pseudopetiolatus*
Lateral flower cluster



190 *Cryptanthus pseudopetiolatus*



191 *Cryptanthus reisii*



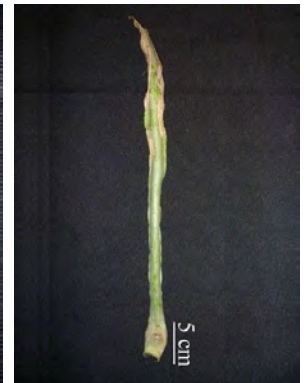
192 *Cryptanthus reisii*



193 *Cryptanthus reisii*



194 *Cryptanthus reisii*



195 *Cryptanthus reisii*

LD

The genus *Cryptanthus* (Bromeliaceae) endemic genus to Brazil

Débora Maria Cavalcanti Ferreira & Rafael Batista Louzada
Universidade Federal de Pernambuco

Photos by the authors, except where indicated (Álvaro Nepomuceno - AN, Erton Mendonça - EM, Geyner Alves - GA, Jefferson Maciel - JM, Lukas Daneu - LD, Rayssa Valentin - RV, Ricardo Pontes - RP). Produced by Débora Maria Cavalcanti Ferreira [deboracavalcantif@hotmail.com] with the assistance of Juliana do Brasil, and Rayane Ribeiro, Field Museum. Support: Brazilian National Council for Scientific and Technological Development - CNPq.

 CC0. This work is dedicated to the public domain. [fieldguides.fieldmuseum.org] [1686] version 1 11/2024



196 *Cryptanthus reisii*



197 *Cryptanthus reisii*



198 *Cryptanthus reisii*



199 *Cryptanthus reisii*
Staminate flower



200 *Cryptanthus reisii*



201 *Cryptanthus reisii*
Perfect flower



202 *Cryptanthus reptans*



203 *Cryptanthus reptans*



204 *Cryptanthus reptans*



205 *Cryptanthus reptans*



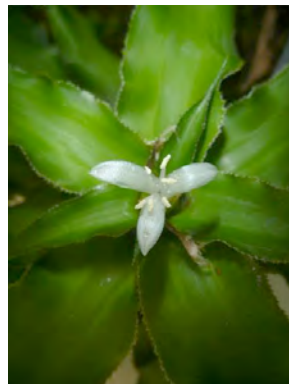
206 *Cryptanthus reptans*



207 *Cryptanthus reptans*



208 *Cryptanthus reptans*



209 *Cryptanthus reptans*



210 *Cryptanthus reptans*

The genus *Cryptanthus* (Bromeliaceae) endemic genus to Brazil

Débora Maria Cavalcanti Ferreira & Rafael Batista Louzada
Universidade Federal de Pernambuco

Photos by the authors, except where indicated (Álvaro Nepomuceno - AN, Erton Mendonça - EM, Geyner Alves - GA, Jefferson Maciel - JM, Lukas Daneu - LD, Rayssa Valentin - RV, Ricardo Pontes - RP). Produced by Débora Maria Cavalcanti Ferreira [deboracavalcantif@hotmail.com] with the assistance of Juliana do Brasil, and Rayane Ribeiro, Field Museum. Support: Brazilian National Council for Scientific and Technological Development - CNPq.

 CC0. This work is dedicated to the public domain. [fieldguides.fieldmuseum.org] [1686] version 1 11/2024



211 *Cryptanthus reptans*
Staminate flower



212 *Cryptanthus rigidifolius*



213 *Cryptanthus rigidifolius*



214 *Cryptanthus rigidifolius*



215 *Cryptanthus rigidifolius*



216 *Cryptanthus rigidifolius*



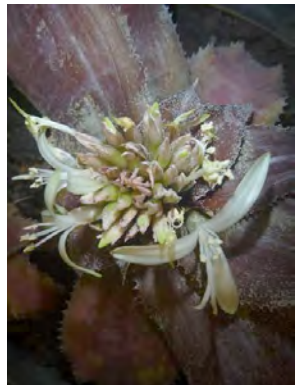
217 *Cryptanthus robsonianus*



218 *Cryptanthus robsonianus*



219 *Cryptanthus robsonianus*



220 *Cryptanthus robsonianus*



221 *Cryptanthus robsonianus*
Lateral flower cluster



222 *Cryptanthus robsonianus*
Staminate flower



223 *Cryptanthus robsonianus*
Perfect flower



224 *Cryptanthus ruthiae*




225 *Cryptanthus ruthiae*
GA

The genus *Cryptanthus* (Bromeliaceae) endemic genus to Brazil

Débora Maria Cavalcanti Ferreira & Rafael Batista Louzada

Universidade Federal de Pernambuco

Photos by the authors, except where indicated (Álvaro Nepomuceno - AN, Erton Mendonça - EM, Geyner Alves - GA, Jefferson Maciel - JM, Lukas Daneu - LD, Rayssa Valentin - RV, Ricardo Pontes - RP). Produced by Débora Maria Cavalcanti Ferreira [deboracavalcantif@hotmail.com] with the assistance of Juliana do Brasil, and Rayane Ribeiro, Field Museum. Support: Brazilian National Council for Scientific and Technological Development - CNPq.

 CC0. This work is dedicated to the public domain.

[fieldguides.fieldmuseum.org] [1686] version 1 11/2024



226 *Cryptanthus ruthiae*



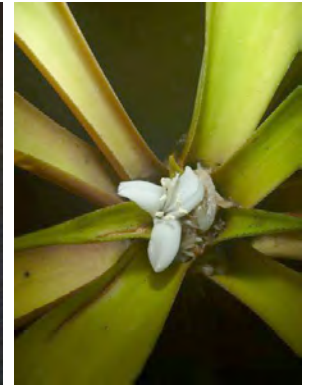
227 *Cryptanthus ruthiae*



228 *Cryptanthus ruthiae*



229 *Cryptanthus ruthiae*



230 *Cryptanthus ruthiae*



231 *Cryptanthus ruthiae*
Apical flower cluster



232 *Cryptanthus ruthiae*
Lateral flower cluster



233 *Cryptanthus ruthiae*



234 *Cryptanthus ruthiae*
Staminate flower



235 *Cryptanthus ruthiae*



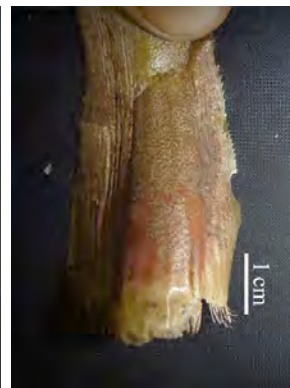
236 *Cryptanthus ruthiae*
Perfect flower



237 *Cryptanthus sergipensis*



238 *Cryptanthus sergipensis*



239 *Cryptanthus sergipensis*



240 *Cryptanthus sergipensis*

The genus *Cryptanthus* (Bromeliaceae) endemic genus to Brazil

17

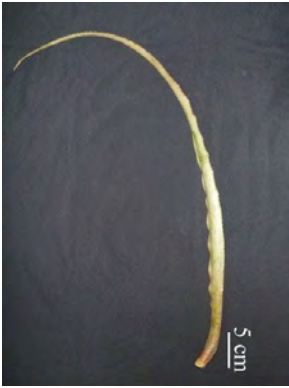
Débora Maria Cavalcanti Ferreira & Rafael Batista Louzada
Universidade Federal de Pernambuco

Photos by the authors, except where indicated (Álvaro Nepomuceno - AN, Erton Mendonça - EM, Geyner Alves - GA, Jefferson Maciel - JM, Lukas Daneu - LD, Rayssa Valentin - RV, Ricardo Pontes - RP). Produced by Débora Maria Cavalcanti Ferreira [deboracavalcantif@hotmail.com] with the assistance of Juliana do Brasil, and Rayane Ribeiro, Field Museum. Support: Brazilian National Council for Scientific and Technological Development - CNPq.

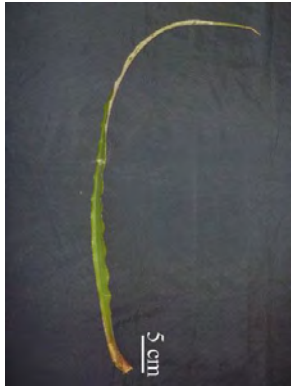


CC0. This work is dedicated to the public domain.

[fieldguides.fieldmuseum.org] [1686] version 1 11/2024



241 *Cryptanthus sergipensis*



242 *Cryptanthus sergipensis*



243 *Cryptanthus sergipensis*



244 *Cryptanthus sergipensis*
Apical flower cluster



245 *Cryptanthus sergipensis*
Lateral flower cluster



246 *Cryptanthus sergipensis*



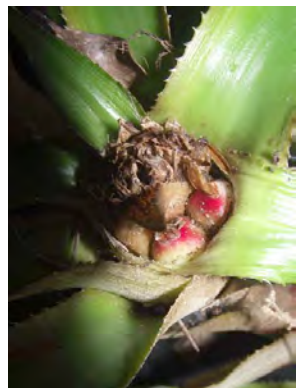
247 *Cryptanthus sergipensis*
Staminate flower



248 *Cryptanthus sergipensis*



249 *Cryptanthus sergipensis*
Perfect flower



250 *Cryptanthus sergipensis*
Perfect flower



251 *Cryptanthus sergipensis*



252 *Cryptanthus teretifolius*



253 *Cryptanthus teretifolius*



254 *Cryptanthus teretifolius*



255 *Cryptanthus teretifolius*

The genus *Cryptanthus* (Bromeliaceae) endemic genus to Brazil

Débora Maria Cavalcanti Ferreira & Rafael Batista Louzada
Universidade Federal de Pernambuco

Photos by the authors, except where indicated (Álvaro Nepomuceno - AN, Erton Mendonça - EM, Geyner Alves - GA, Jefferson Maciel - JM, Lukas Daneu - LD, Rayssa Valentin - RV, Ricardo Pontes - RP). Produced by Débora Maria Cavalcanti Ferreira [deboracavalcantif@hotmail.com] with the assistance of Juliana do Brasil, and Rayane Ribeiro, Field Museum. Support: Brazilian National Council for Scientific and Technological Development - CNPq.



CC0. This work is dedicated to the public domain.

[fieldguides.fieldmuseum.org] [1686] version 1 11/2024



256 *Cryptanthus teretifolius*



257 *Cryptanthus teretifolius*



258 *Cryptanthus teretifolius*



259 *Cryptanthus teretifolius*
Staminate flower



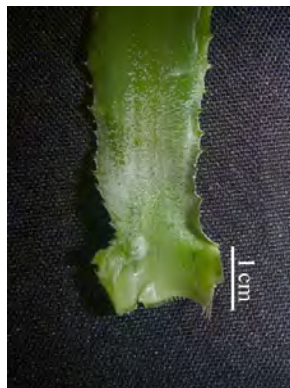
260 *Cryptanthus venecianus*
AN



261 *Cryptanthus venecianus*



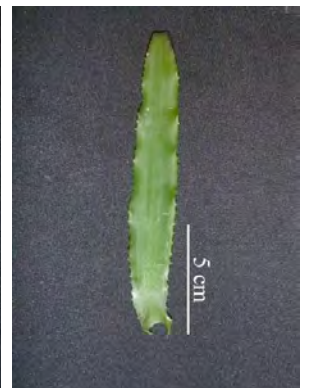
262 *Cryptanthus venecianus*



263 *Cryptanthus venecianus*



264 *Cryptanthus venecianus*



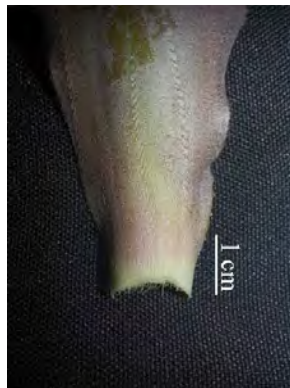
265 *Cryptanthus venecianus*



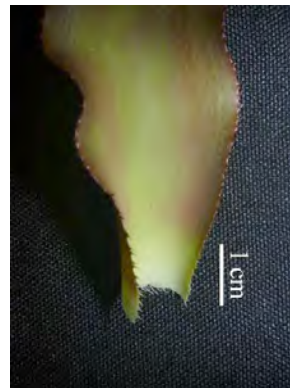
266 *Cryptanthus vexatus*



267 *Cryptanthus*
vvinosibractetus



268 *Cryptanthus*
vvinosibractetus



269 *Cryptanthus*
vvinosibractetus



270 *Cryptanthus*
vvinosibractetus

The genus *Cryptanthus* (Bromeliaceae) endemic genus to Brazil

19

Débora Maria Cavalcanti Ferreira & Rafael Batista Louzada

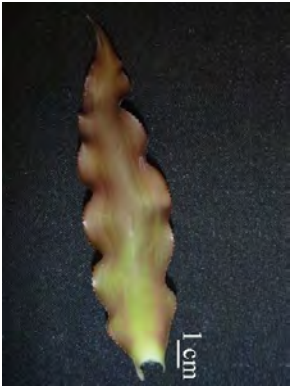
Universidade Federal de Pernambuco

Photos by the authors, except where indicated (Álvaro Nepomuceno - AN, Erton Mendonça - EM, Geyner Alves - GA, Jefferson Maciel - JM, Lukas Daneu - LD, Rayssa Valentin - RV, Ricardo Pontes - RP). Produced by Débora Maria Cavalcanti Ferreira [deboracavalcanti@hotmail.com] with the assistance of Juliana do Brasil, and Rayane Ribeiro, Field Museum. Support: Brazilian National Council for Scientific and Technological Development - CNPq.

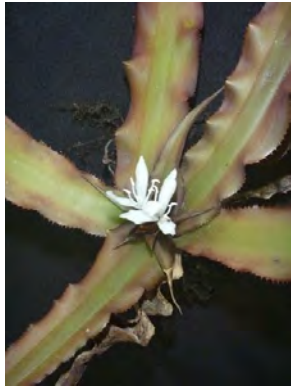


CC0. This work is dedicated to the public domain.

[fieldguides.fieldmuseum.org] [1686] version 1 11/2024



271 *Cryptanthus vvinosibractetus*



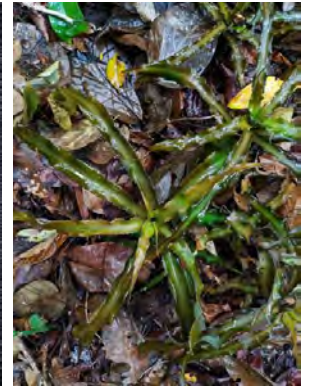
272 *Cryptanthus vvinosibractetus*



273 *Cryptanthus vvinosibractetus*



274 *Cryptanthus vvinosibractetus*
Staminate flower



275 *Cryptanthus viridipetalus*



276 *Cryptanthus viridipetalus*



277 *Cryptanthus viridipetalus*



278 *Cryptanthus viridipetalus*



279 *Cryptanthus viridipetalus*



280 *Cryptanthus viridipetalus*



281 *Cryptanthus walkerianus*



282 *Cryptanthus walkerianus*



283 *Cryptanthus walkerianus*



284 *Cryptanthus walkerianus*



285 *Cryptanthus walkerianus*

The genus *Cryptanthus* (Bromeliaceae) endemic genus to Brazil

20

Débora Maria Cavalcanti Ferreira & Rafael Batista Louzada
Universidade Federal de Pernambuco

Photos by the authors, except where indicated (Álvaro Nepomuceno - AN, Erton Mendonça - EM, Geyner Alves - GA, Jefferson Maciel - JM, Lukas Daneu - LD, Rayssa Valentin - RV, Ricardo Pontes - RP). Produced by Débora Maria Cavalcanti Ferreira [deboracavalcanti@hotmail.com] with the assistance of Juliana do Brasil, and Rayane Ribeiro, Field Museum. Support: Brazilian National Council for Scientific and Technological Development - CNPq.



CC0. This work is dedicated to the public domain.

[fieldguides.fieldmuseum.org] [1686] version 1 11/2024



286 *Cryptanthus walkerianus*



287 *Cryptanthus walkerianus*
Lateral flower cluster



288 *Cryptanthus walkerianus*



289 *Cryptanthus walkerianus*
Staminate flower



290 *Cryptanthus walkerianus*



291 *Cryptanthus walkerianus*
Perfect flower



292 *Cryptanthus warren-loosei*
RV



293 *Cryptanthus warren-loosei*



294 *Cryptanthus warren-loosei*



295 *Cryptanthus warren-loosei*



296 *Cryptanthus warren-loosei*



297 *Cryptanthus warren-loosei*



298 *Cryptanthus warren-loosei*



299 *Cryptanthus warren-loosei*



300 *Cryptanthus warren-loosei*
Staminate flower

The genus *Cryptanthus* (Bromeliaceae) endemic genus to Brazil

21

Débora Maria Cavalcanti Ferreira & Rafael Batista Louzada

Universidade Federal de Pernambuco

Photos by the authors, except where indicated (Álvaro Nepomuceno - AN, Erton Mendonça - EM, Geyner Alves - GA, Jefferson Maciel - JM, Lukas Daneu - LD, Rayssa Valentin - RV, Ricardo Pontes - RP). Produced by Débora Maria Cavalcanti Ferreira [deboracavalcanti@hotmail.com] with the assistance of Juliana do Brasil, and Rayane Ribeiro, Field Museum. Support: Brazilian National Council for Scientific and Technological Development - CNPq.



CC0. This work is dedicated to the public domain.

[fieldguides.fieldmuseum.org] [1686] version 1 11/2024



301 *Cryptanthus warren-loosei*



302 *Cryptanthus warren-loosei*
Perfect flower



303 *Cryptanthus zonatus*



304 *Cryptanthus zonatus*



305 *Cryptanthus zonatus*



306 *Cryptanthus zonatus*



307 *Cryptanthus zonatus*



308 *Cryptanthus zonatus*



309 *Cryptanthus zonatus*



310 *Cryptanthus zonatus*



311 *Cryptanthus zonatus*



312 *Cryptanthus zonatus*



313 *Cryptanthus zonatus*



314 *Cryptanthus zonatus*
Lateral flower cluster



315 *Cryptanthus zonatus*

The genus *Cryptanthus* (Bromeliaceae) endemic genus to Brazil

22

Débora Maria Cavalcanti Ferreira & Rafael Batista Louzada
Universidade Federal de Pernambuco

Photos by the authors, except where indicated (Álvaro Nepomuceno - AN, Erton Mendonça - EM, Geyner Alves - GA, Jefferson Maciel - JM, Lukas Daneu - LD, Rayssa Valentin - RV, Ricardo Pontes - RP). Produced by Débora Maria Cavalcanti Ferreira [deboracavalcantif@hotmail.com] with the assistance of Juliana do Brasil, and Rayane Ribeiro, Field Museum. Support: Brazilian National Council for Scientific and Technological Development - CNPq.



CC0. This work is dedicated to the public domain.

[fieldguides.fieldmuseum.org] [1686] version 1 11/2024



316 *Cryptanthus zonatus*
Staminate flower



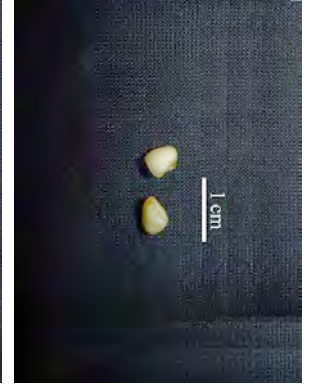
317 *Cryptanthus zonatus*



318 *Cryptanthus zonatus*
Perfect flower



319 *Cryptanthus zonatus*



320 *Cryptanthus zonatus*