

Kelly Schultz¹, Dale Shields²

³Ncmg"Eqwpr{"Hqtguv"Rtgugt" Fkvtkev."⁴Xqnpwpggt"Uvg yct fujkr" Pgyv qtm

Photos" Í 4221"FLUjkgfnfu"Rtqfwegf"d{<Fcg"Ujkgfnfu' ("Mgn{"Uejwnv|" Í Ncmg"Eqwpr{"Hqtguv"Rtgugt" Fkvtkev"}muej wnv| B nehr f"qti_"



[1271]

version 2 3/2021

Blue Cohosh

Caulophyllum thalictroides

BERBERIDACEAE

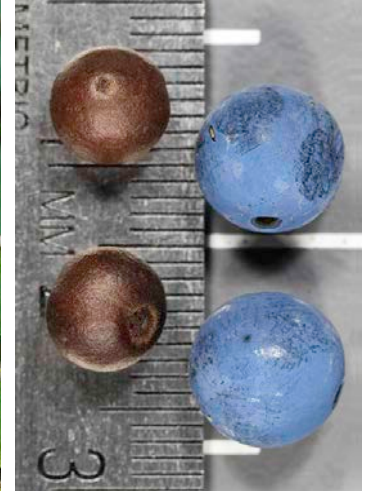


Photo: 8-25-18

Berries. Looks like a blueberry, but it is actually a hard nut with a dry papery blue shell. Leaves are shaped like *Thalictrum* (“thalictroides”). Reportedly takes 5 years to germinate from seeds (yes, 5!) but may germinate faster when sown fresh. Individuals dug up during a plant rescue went dormant for 2 years from transplant shock. A conservative species of mesic woodlands & savannas.

Enchanter’s Nightshade

Circaea canadensis

ONAGRACEAE



Photo: 8-25-18

Hitchhikers. This species is abundant throughout our region’s woodlands and is only worth (intentionally) collecting for new restorations. Collect when it sticks to your socks.

White Baneberry

aka

Doll’s Eyes

Actaea pachypoda

RANUNCULACEAE



Photo: 8-31-18

Berries. An awesomely creepy plant, the common name is very appropriate. Collect when berries are white-ish. As with any plant called a “bane,” this is not one you want to eat.

Summer Woodland Forbs

Kelly Schultz¹, Dale Shields²

version 3 2/2021

¹Lake County Forest Preserve District, ²Volunteer Stewardship Network

Images ©DJS Shields. Produced by: Dale Shields & Kelly Schultz ©Lake County Forest Preserve District [kschultz@lcfpd.org]

Golden Alexanders

Zizia aurea

APIACEAE



Photo: 8-25-17

Shattering. This common parsley-relative has bright yellow flowers that turn to green seeds and finally ripen to brown. Collect when easy to strip by hand. Most often mesic to wet-mesic prairies, but can be in open woodlands, savannas, prairies, and fens, from wet to dry.

Smooth Bank Cress

Boechera laevigata

BRASSICACEAE



Photo: 8-26-18

Ballistic. This easily overlooked native biennial loves rocky shady habitats. The small flowers become thin “siliques” (skinny pods, like garlic mustard’s, but those point upward). Look for open siliques, collect some unopened pods (<10%).

Wood Mint

Blephilia hirsuta

LAMIACEAE



Photo: 8-28-19

Shakers. Like *Monarda* and many other mints, seeds are held in “tubes” (the calyx). Tip into your hand, seeds will fall out if ripe. Differs from Ohio horse mint (*B. ciliata*) with longer petioles & longer stem hairs, minty odor when the leaves are crushed, prefers a little shade.

Summer Woodland Forbs

Kelly Schultz¹, Dale Shields²

version 3 2/2021

¹Lake County Forest Preserve District, ²Volunteer Stewardship Network

Images ©DJS Shields. Produced by: Dale Shields & Kelly Schultz ©Lake County Forest Preserve District [kschultz@lcfpd.org]

Tall Agrimony

Agrimonia gryposepala

ROSACEAE

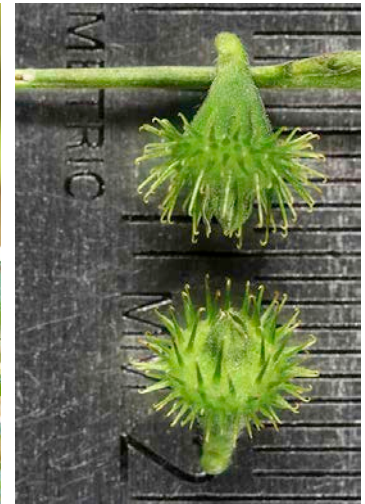


Photo: 8-30-18

Hitchhikers. All agrimony species are priceless aka unavailable on the commercial market. This is the most common of them. Little yellow flowers turn into green burrs, about ¼" in diameter. Easy to spot due to the seed size, easy to collect, good for early woodland restorations.

Beaked Agrimony

Agrimonia rostellata

ROSACEAE

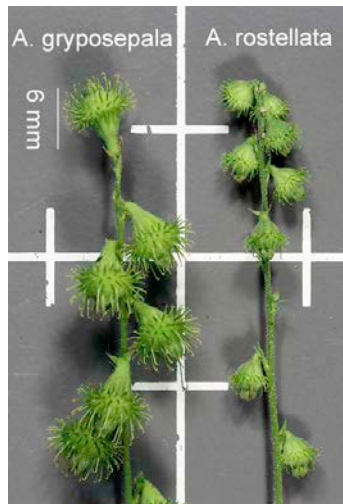


Photo: 8-30-18

Hitchhikers. This species favors mesic/upland woodlands and has smaller fruits than the common *A. gryposepala*. Collect when it sticks to your clothes, easily strips by hand. Agrimony are relatively friendly hitchhikers – very easy to clean off of your pants.

Starry Campion

Silene stellata

CARYOPHYLLACEAE

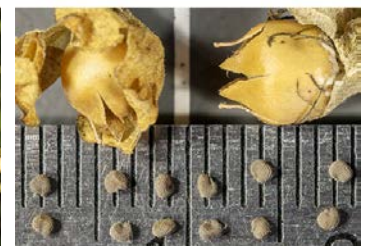


Photo: 8-28-18

Beaks. This lovely plant can be found in healthy savannas, open woods, and sometimes wet-mesic prairies. The flower is a white fringed star. Capsules form inside the paper calyx; collect beige capsules.



Summer Woodland Forbs

Kelly Schultz¹, Dale Shields²

version 3 2/2021

¹Lake County Forest Preserve District, ²Volunteer Stewardship Network

Images ©DJS Shields. Produced by: Dale Shields & Kelly Schultz ©Lake County Forest Preserve District [kschultz@lcfpd.org]

Pale Indian Plantain

*Arnoglossum
atriplicifolium*

ASTERACEAE

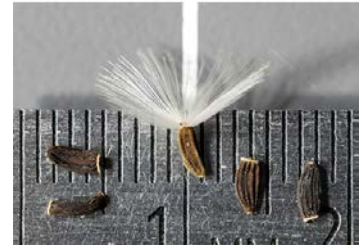


Photo: 8-31-18

Fluffy. This towering plant is regionally uncommon (C = 8) but locally abundant. Underside of leaves are *pale* and lobed. Snip when fluffy, pappus (fluff) is bleach white and seeds are plump and blackish. Readily self-seeds.