



Annotation

Phylloblastia dolichospora Vain. [as 'dolichophora'], Ann. Acad. Sci. fenn., Ser. A 15(no. 6): 323 (1921)

Family: Verrucariaceae

Material examined: Philippines, Quezon, on leaves, October 1909, R. C. McGregor, #10803 (C0003280F, isotype).

Note: *Phylloblastia dolichospora* could not find in the specimen (C0003280F, isotype of *Phylloblastia dolichospora* Vain.). The possible species are *Strigula dispersa*, *S. concreta*, *S. prasina*, *S. smaragdula*, *S. subtilissima*. The morphological characters are described as following:

Foliicolous on the surface of leaves with thallus. **Sexual morph:** *Thallus* continuous, mottled white, greenish-grey or brownish, thin to thick, crustose, non-lobate, smooth. *Ascomata* perithecial, solitary, usually paired or in groups of three, numerous, immersed to semi-immersed, smooth, ostiolate. *Involutellum* convex, jet-black and glossy. *Excipulum* multi-layered, hyaline to lightly pigmented at the base and lower sides, dark brown towards the apex, composed of irregular cells. *Hamathecium* comprising long, filiform, simple to sparingly branched, hyaline paraphyses, non-periphyses. *Asci* unitunicate, fissitunicate, 8-spored, hyaline, clavate to oblong, apex rounded, ocular chamber minute. *Ascospores* uniseriate, hyaline, elongate-ellipsoid to elongate-fusiform, 3-septate, slightly curved at both ends, smooth-walled, without a thin gelatinous sheath. **Asexual morph:** Undetermined.

School of Science, Mae Fah Luang University, 333 M. 1, Tasud, Muang, Chiang Rai 57100, Thailand

Qing Tian

Qing Tian (PhD Student)

5th March 2020

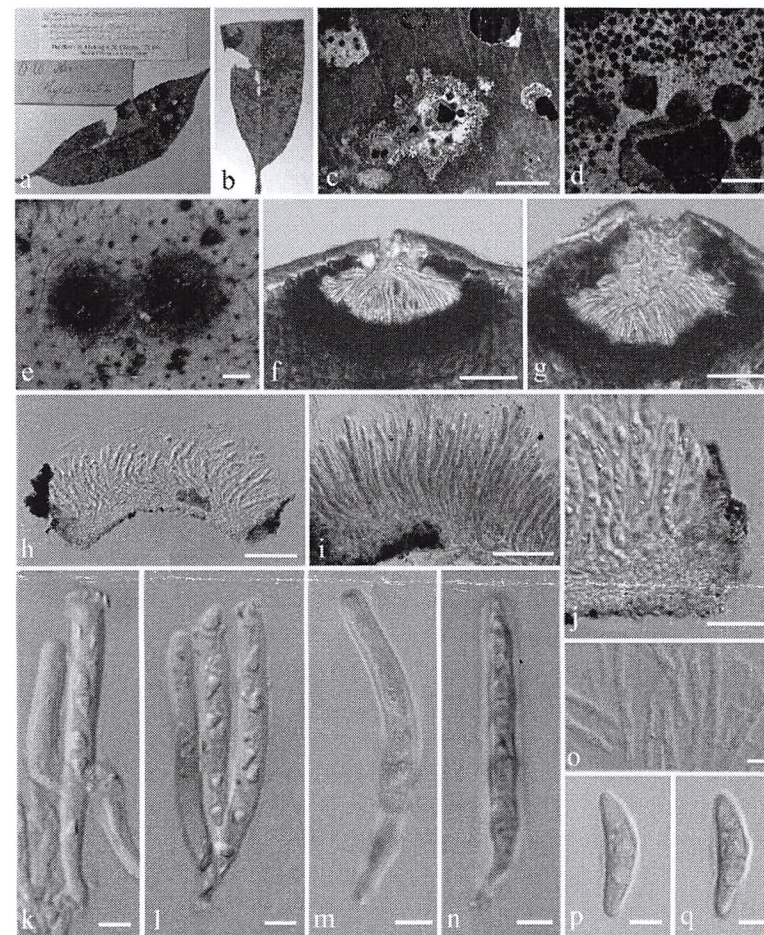


Fig. 1. a, b Herbarium material. c–e Appearance of ascomata on the surface of leaves with thallus. f, g Vertical section of ascomata. h–j Vertical section through peridium. k–n Asci. o Hamathecium. p, q Ascospores. Scale bars c = 5 mm, d = 1 mm, e = 200 μ m, f–i = 50 μ m, j = 20 μ m, k–q = 5 μ m.

