

5418-16/01

253470

A.B.

Field No.

A 139

Neg. No.

ALB. P. 336

Provenience: CHINA

People or Culture: Chinese      Period: Late Ch'ing

Object: Pair of scent bags

Material: Satin

Description: Round satin bag with white on obverse, dark brown on reverse. Couched silver thread design and appliqued prunus blossoms in various colors. Green cords with endless knots.

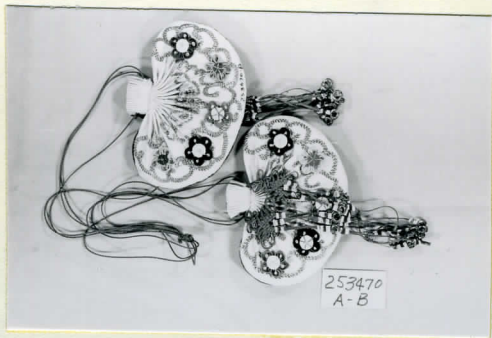
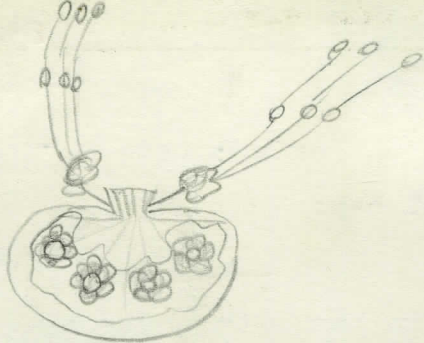
Dimensions:

(in cm.)

max width: 10.3, max height: 7.3

Acc. 2786

Collection: C. F. Bieber Collection of Asian Folk and Minor Arts, purchased from Miss Caroline Frances Bieber 15 November 1962



253470  
A-B