

AGENT

CHICAGO NATURAL HISTORY MUSEUM—ETHNOLOGY

54B-15/2

254170

Provenience: CHINA

Field No.

MA 11

People or Culture: Chinese\*

Period: Late Ch'ing  
or early modern

Object: Flint and steel case

Material: Leather, brass, iron

Description: Brass open-work on folded black, rippled  
leather, iron striking edge.

\*Probably Chinese.

Neg. No.

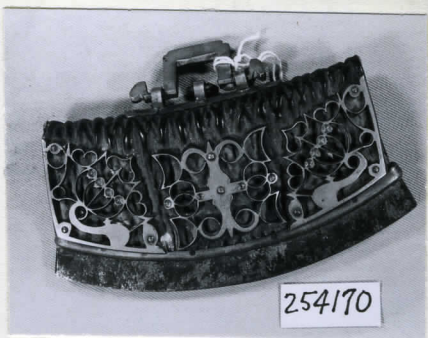
ALB P. 317

Dimensions:  
(in cm.)

max. width: 11.0 max height: 5.4

Acc. 2786

Collection: C. F. Bieber Collection of Asian Folk and Minor  
Arts, purchased from Miss Caroline Frances Bieber  
15 November 1962



254170