

AENT

CHICAGO NATURAL HISTORY MUSEUM—ETHNOLOGY 54B-13/11

253628

Provenience: CHINA

Field No.

People or Culture: Chinese Period: Late Ch'ing

A 162

Object: "Square", poss. pillow end

Material: Satin, velvet

Description: White satin embroidered with Peking knot, couch and satin stitches; dragon with wang character on forehead in green, aqua, red, brown, and gold. Ribbon trim, wide black velvet border with decorative gold stitching.

Neg. No.

ALB. P. 340

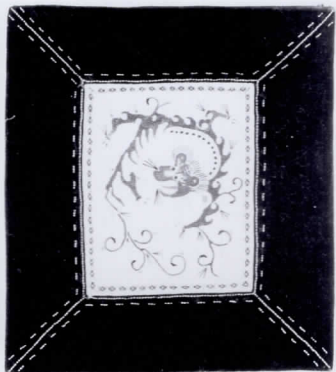
Dimensions:

(in cm.)

17.4 x 19.7

Acc. 2786

Collection: C. F. Bieber Collection of Asian Folk and Minor Arts, purchased from Miss Caroline Frances Bieber 15 November 1962



253628