

ENT

CHICAGO NATURAL HISTORY MUSEUM—ETHNOLOGY

548-13/4

234796

A-B

Field No.

Provenience: CHINA, possibly Shen-hsi and Peking

People or Culture: Chinese

Object: Pillow-covers

Woven

Material: Cotton, metal snaps

Description: Pair of light blue, dark blue and white pillow-covers, each buttoned by 7 brass snaps; bag-shaped; front made of fabric from Shen-hsi (?), back plain light blue cotton from Peking. Design: 4 parallel bands of light blue on white; dark blue, light blue, and white stripes between, above, and below the bands; top and bottom band alike, meander; band 2, pair of fish at center flanked by 2 eternal knots and 2 shorter meanders; band 3: same, but fish exchanged for

Dimensions:

A+B: (in cm.)

46.5 x 73.

rosette. Made into pillowcases by CS in Peking.

1932
Neg. No.

Acc. 2724

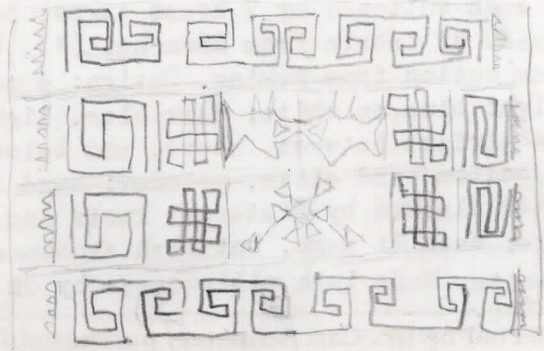
Collection: collected by Dr. Carl Schuster; purchased from Dr. Schuster 7 December 1960

possibly Shensi

231798

People or Culture: Chinese

A+B



no. 5754