

A
ENT

CHICAGO NATURAL HISTORY MUSEUM—ETHNOLOGY 546-13/23

234081

Provenience: CHINA, Ssu-ch'uan, Ch'i-Chiang Hsien,
Chi'i-Chiang. 106.39/29.02 四川綦江縣

Field No.

People or Culture: Chinese

1935.190

Object: CS: One half of a bedvalance or one complete
door valance.

Material: Embroidered cotton

Description: Dark blue cross-stitch and, on hem, variety
stitch, on off-white cotton. Hem: 2 sides. Zig-
zag design. Field: 3 medallions. Med.1: CS: 4 pairs
of "lions" confronting ball. Above each ball (on a
stalk) grows a peach with 2 monkeys (stealing the peach
of immortality) confronted on each side. Med.2: Floral
around central square. Med.3: 2 confronted lions in-
side central square, 4 flowers and 4 pairs of confron-

Neg. No.

Dimensions: ted birds. CS: In pair with 234080.

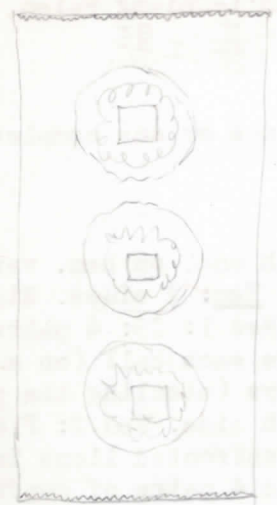
(in cm.)

112 x 36

Acc. 2724

Collection: collected by Dr. Carl Schuster; purchased from
Dr. Schuster 7 December 1960

PROVINCE: CHINA
POPULAR NAME: Chinese
OBJECT: One half of a ...
MATERIAL: ...



Collected by Dr. Carl Schuster; purchased from
Dr. Schuster 7 December 1906

1907