

Trichobius uniformis, new species

Figure 8

A small species, only about 1.25 mm. in length, the mesonotum with almost uniform bristles.

Head pyramidal; eyes small; palpi sparsely bristled on the under surface. Mesonotum and scutellum longer than wide, the suture separating them entire although very weak except toward the sides; median mesonotal line extending to the suture, the suture curved forward medianly; scutellum with four bristles. Legs robust; femora with bristles. Wings with venation and chaetotaxy as figured. Abdomen with numerous tiny setulae beneath.

TYPES.—Holotype, female, allotype, male, from *Glossophaga soricina leachi* Gray, Paraiso, Canal Zone, October 17, 1930 (No. 31). Paratypes: male and female, from *Lonchophylla robusta* Miller, Chilibrillo Caves, Panama, March 9, 1933 (No. 16); male and two females, from *Glossophaga soricina leachi* Gray, Bella Vista, near Panama City, June 25, 1931 (Nos. 33 and 34). All the specimens were collected by Major L. H. Dunn.

Trichobius mixtus, new species

Figure 10

A moderately large species (length about 2 mm.), very similar to *dugesii* Townsend, but without strong bristles on the middle of the mesonotum in front.

Palpi rather convex on the inner edge, bearing a long bristle on the outer apex and with two shorter bristles in front; bristles of the head rather long; propleura prominent, with three bristles on the outer edge; mesonotum and scutellum longer than wide, the transverse suture bowed back, the disc evenly setulose, in front with very short bristles, the sides with longer ones. Femora robust, bearing bristles. First and third veins each with one strong basal bristle, the fourth with three. Abdomen with strong bristles on the sides basally and at the apex.

TYPES.—Holotype, male, and six paratypes, males, from *Phyllostomus hastatus panamensis* Allen, Chilibrillo Caves, Panama, August 4, 1931 (L. H. Dunn).

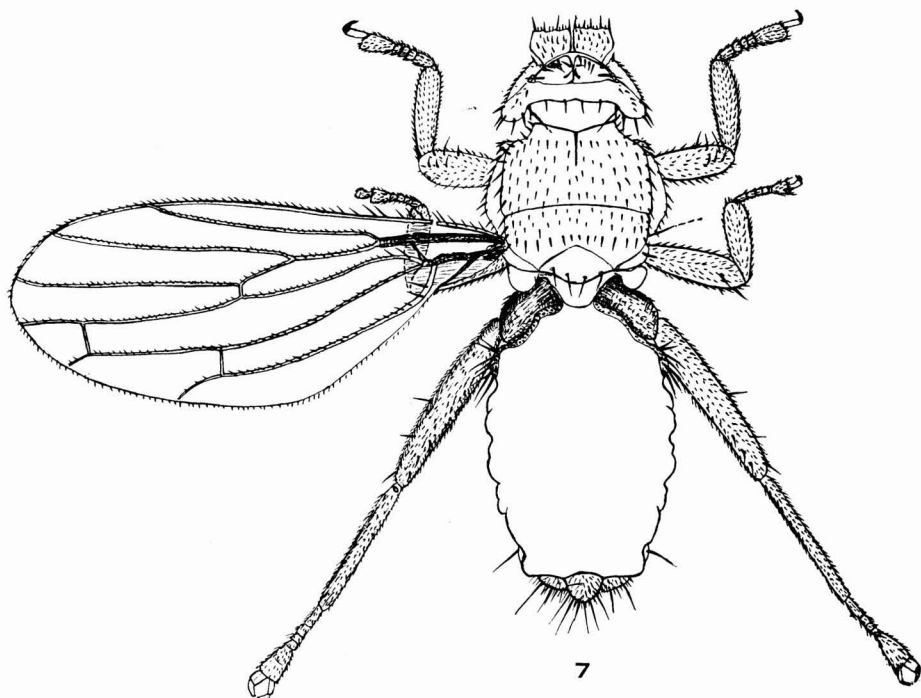
Trichobius blandus, new species

Figure 11

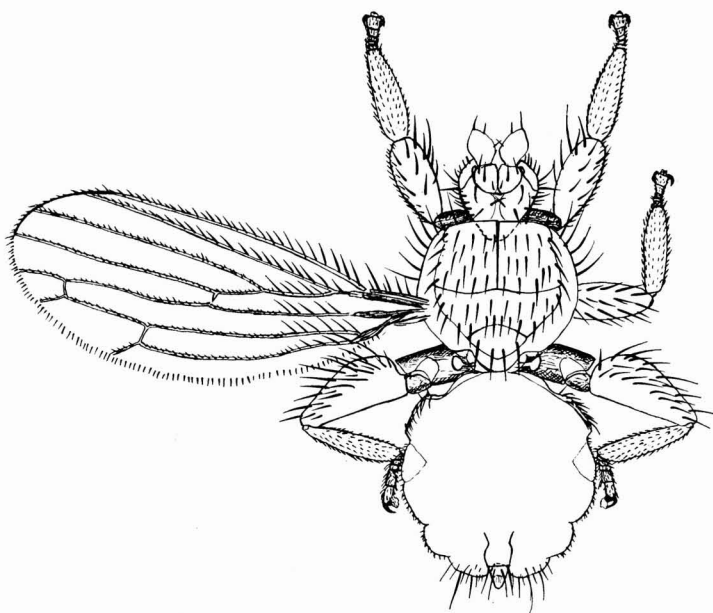
A small species (1.25 to 1.5 mm. long), related to *parasiticus* Gervais, but with the mesonotum much more extensively bristled.

Head with rather few bristles; palpi convex inwardly, the outer apex with a long fine bristle, the apex with two short bristles, the under side sparsely setulose. Thorax almost transverse in front; mesonotum and scutellum about as long as wide, the mesonotum with tiny setulae and bristles as shown in the figure, the setulae before the scutellum only a little stronger than those on the disc; prothorax rather truncate and with bristles in front. First vein with a very long basal bristle, the fourth and fifth each with two weaker ones. Legs with bristles. Abdomen with bristles apically and on the sides basally, the sides with numerous tiny setulae, the disc bare.

TYPES.—Holotype, male, allotype, female, and paratypes, two females, from *Glossophaga soricina leachi* Grey, Paraiso, Canal Zone, October 17, 1930 (No. 7);



7



8

Fig. 7. *Eldunnia breviceps* Curran, female.

Fig. 8. *Trichobius uniformis*, new species, female.