

## FIELD MUSEUM OF NATURAL HISTORY—ETHNOLOGY

22-46

ENT  
194275

Provenience: Nigeria, Moro

Card #1

Field No.

People or Culture: Yoruba

13

Object: Calabash tool

Material: calabash

Description: A potter's tool, used in making pots.  
The piece of calabash is sharpened with a knife, and then used to scrape the inside and the outside of pots as they are constructed.

Neg. No.

599.7A

599.17A

599.18A

Dimensions:  
(in cm.)

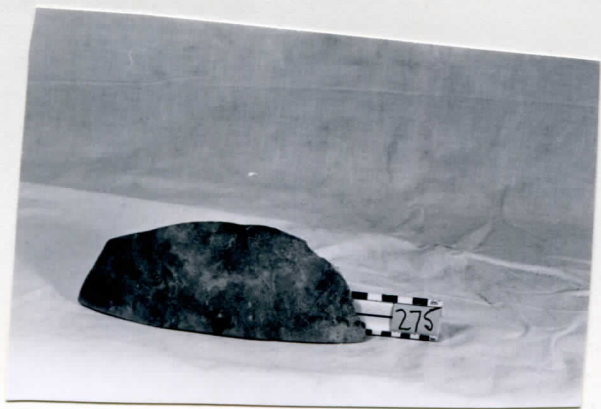
L 16 cm w. 8 1/2 cm

Collection:

Purchased from Mrs. Maude Wahlman  
February 17, 1971

Acc.

3144



ENT

A

194275

## FIELD MUSEUM OF NATURAL HISTORY—ETHNOLOGY

22-46

Field No.

13

**Provenience:** Nigeria, Moro.**People or Culture:** Yoruba

Card #2

**Object:** Calabash tool.**Material:** Calabash**Description:** A potter's tool, used in making pots. The piece of calabash is sharpened with a knife, and then used to scrape the inside and the outside of pots as they are constructed.**Neg. No.**

599.7A

599.17A

599.18A

**Dimensions:** L 16 cm w 8 1/2 cm  
(in cm.)3  
Acc.

3144

**Collection:** Purchased from Mrs. Maude Wahlman  
February 17, 1971

