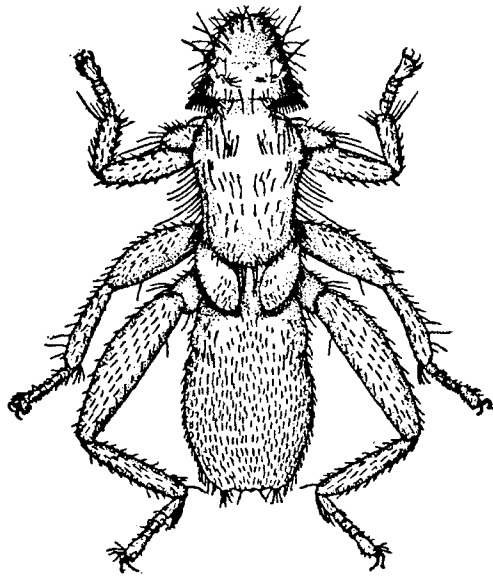


**METELASMUS** n. gen. of Streblidae.

Near *Strebla* but the wings reduced to somewhat oval pads less than half as long as the thorax. Head depressed, somewhat bell-shaped, fringed around the margins with setae, the posterior end fringed with flattened spines below, at the sides and on the hind angles of the upper side; no antennæ, eyes or ocelli. Thorax somewhat injured in the single specimen



*Metelasmus pseudopterus* Coquillett.

before me, but apparently of the form shown in the figure; sternum sparsely covered with short, bristly hairs and fringed with setæ around the front end, medium sulcus three-branched posteriorly. Abdomen and legs as in the figure. Type, the following species:

***Metelasmus pseudopterus*** n. sp.

Head brownish yellow, a transverse pair of pale yellow spots near the middle; body dark yellow, legs pale yellow; aborted wings dark yellow and with a pale yellow costal spot before the middle of each; spines and bristles, like the tarsal claws, black; length 2.5 mm.

Sapucay, Paraguay, South America. A single specimen collected on a bat, *Artibius lituratus*. Type No. 10293. U. S. National Museum.