

Holotype and allotype from one of the following bats : *Rousetus amplexicaudatus* (Geoffroy) or *Eonycteris spelaea glandifera* Lawrence, Luangbay Cave, Sitio Tegato, Davao City, Mindanao, P.I., 22.x.1946 ; 1 paratype from bag for collecting bats, and 10 paratypes collected in flight, same locality and date ; 1 paratype from *Rhinolophus rufus* Eydaux and Gervais, and 21 paratypes from one of the following bats or from both : *Rhinolophus arcuatus exiguus* Andersen and *Hipposideros galeritus galeritus* Cantor, same locality and date ; and 4 paratypes from bats' dung, same locality and date.

Holotype and allotype and many paratypes are preserved in the Chicago Natural History Museum. Two paratypes are in the author's collection.

Nycteribosca modesta Jobling, 1934a.

The type of this species was collected in Alutnevara, Ceylon, from *Rhinolophus rouxi* Temminck. It has also been recorded from a bat, Mao Marroe, Sumba Is., and from a bat in Camp del Monte, Philippines.

Present record : 1 specimen from *Rhinolophus virgo* Andersen, Tanabag, Puerto Princesa, Palawan I., Palawan Prov., P.I., 17.iii.1946, coll. by F. Werner ; and 28 specimens from *Rhinolophus blythi blythi* Andersen, Myitkyina, Burma, 15.viii.1945, coll. by Major R. Traub.

Nycteribosca wernerii sp. n. (fig. 8).

This species resembles *N. modesta* and *N. proxima*, but is larger. It also differs from these species by its large cordiform postvertex and by the structure of the proctiger which is dome-shaped.

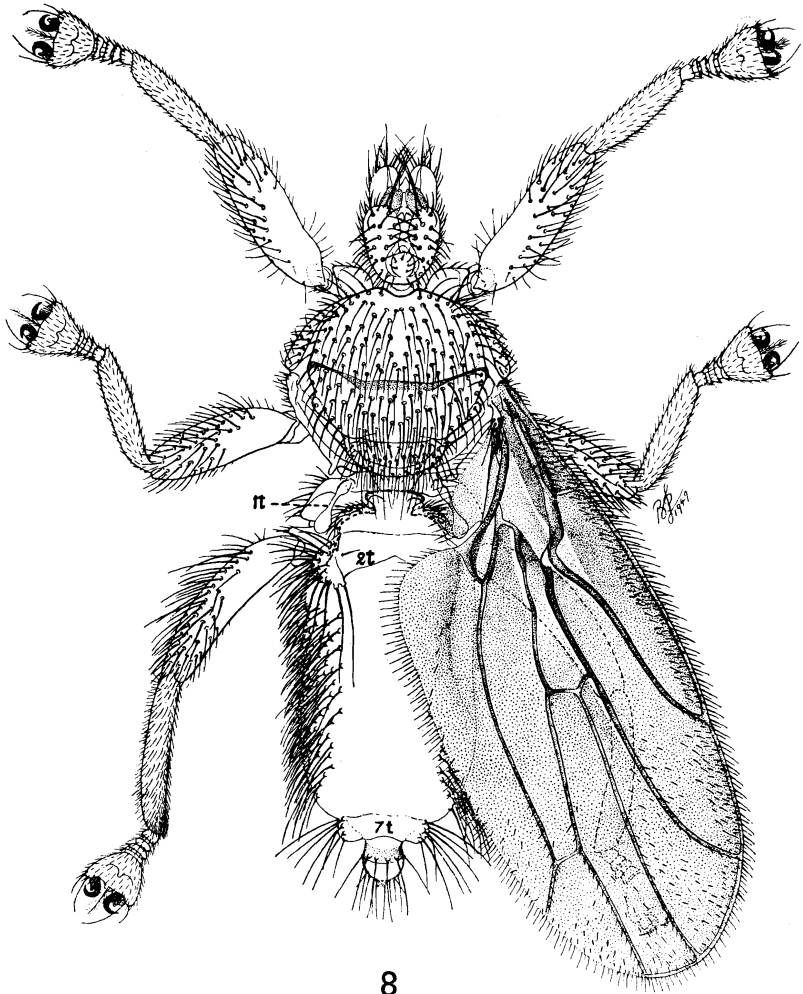
Body 2.4-2.7 mm. long in male and female respectively. Head cup-shaped when examined from above ; mediovertex narrow ; each laterovertex with a row of strong setae along the inner margin and in the lateral parts ; postvertex large, cordiform, fused with occiput, with a few small setae. Eyes small, not projecting beyond the lateral margin of the head. Ventral surface of head with a row of moderately strong setae along the inner margin and weaker setae in the lateral parts. Palpi nearly as long as broad, with broadly rounded anterior margin ; their ventral surface bears long setae in the anterior part and shorter ones in the posterior part. Theca of labium almost cordiform, labella very small.

Thorax distinctly broader than long ; prescutum slightly longer than the scutum, uniformly setose ; anterior and posterior parts of scutum with the same setae as those arising from the prescutum and with much longer setae in the middle ; scutellum crescent-shaped, with short setae in the anterior and the posterior parts and six very long, thin setae in the middle ; posterior part of the thoracic squamae papilliform. Ventral surface of thorax bears very small uniform setae. Legs long ; femora normal, with strong setae ; 5th tarsal segment large, broader than the length of all the other segments together.

Wings broad, 2.1-2.3 mm. long in male and female respectively ; first longitudinal vein gently bent towards costa in its distal part ; 3rd and 4th longitudinal veins divergent near the apex of the wing ; anterior cross-vein distinctly longer than the proximal part of the 3rd longitudinal vein ; submarginal, marginal and posterior cells moderately setose ; apex of alula more or less broadly rounded.

Abdomen with a row of very long setae on each side of the bare part of its dorsal surface, and with strong but shorter setae laterally to these ; its ventral surface bears many small setae ; in the middle of the posterior part of this surface the setae become gradually much longer ; lateral parts of the 7th tergite with a few long setae ; proctiger

dome-shaped, with four dorsal, two lateral and two ventral long setae. Male abdomen ends in a semispherical hypopygium, which does not differ in its structure from that of *N. proxima*.



8

FIG. 8.—*Nycteribosca weneri* sp. n. 1t, first tergite; 2t, second tergite; 7t, seventh tergite.

Holotype, allotype and ten paratypes were collected from *Hipposideros diadema griseus* Meyer, in Central Cave, Cotabato City, Cotabato Prov., Mindanao, P.I., 26-27.xii.1946, by F. Werner; and 1 paratype from *Eonycteris robusta* Miller, in Cave at Dilerig, Bukidnar Prov., Mindanao, P.I., collected by L. H. Phillips.

Holotype, allotype and eight paratypes are preserved in the Chicago Natural History Museum, and two paratypes in the author's collection.