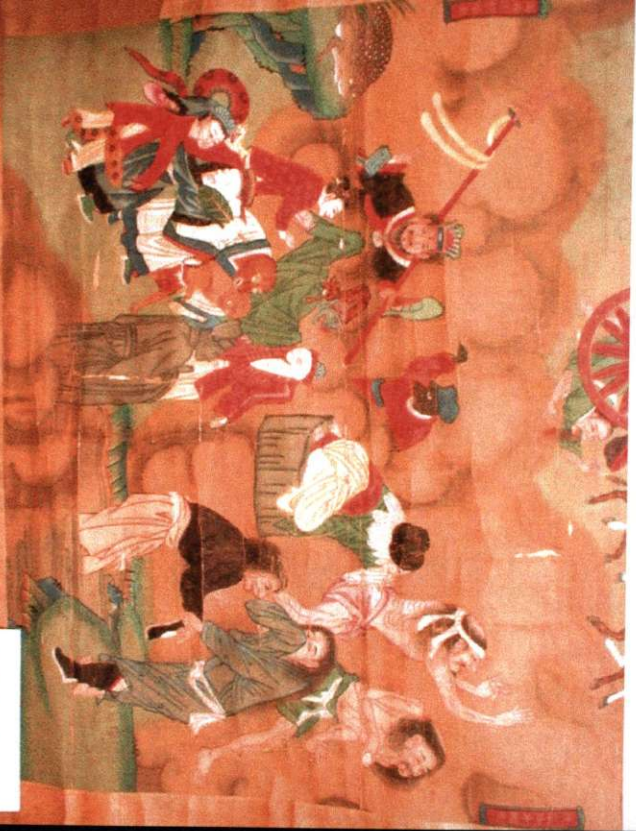


ching? GROUP		PLACE			CODE	
Locality <b>Peking.</b> People <b>Chinese.</b> Stock. Name <i>Painting on silk; the ghosts of the departed.</i> Above, the Preta designated 餓鬼 Beneath the animal spirits of the mountains, & the ghosts of those who fell into rivers & wells 投河落井魂眾 Picture of great mythological interest. (over)			CONTACT & NEG. NOS.			121242 CAT. NO. 1114 ACC. NO. 1536 Laufer CONDITIO
Collection <b>Mrs. T. B. Blackstone Expedition,</b> <b>Berthold Laufer, Collector 1908-1910.</b>			PUBLISHED REFERENCES			
Notes <i>In the centre 車碾馬踏魂眾 Torture of cul-          prits run over by a waggon, trampled down by a horse, &amp;          eaten by a hyen.</i> Width _____ Height _____ Price <i>6 hex</i>						MUS. LOCATION

00024.jpg | 21242



121242

pic00023.jpg | 21242





In the upper portion the Preta (In Chinese "Hungry Demons") are represented. Avaricious and rapacious men are reborn in this manner in the other world. They are believed to have large mouths and narrow throats so that they cannot swallow food, and must suffer unappeasable hunger. In the middle portion culprits are being run over by a wagon, trampled down by a horse, and devoured by a tiger, -punishments inflicted upon them. In the lower portion, the animal spirits of the mountains, and the ghosts of those who perished by falling into rivers and wells are illustrated.

(This information taken from old labels)

ic00022.jpg 121242

