

Ching

GROUP

Yüan
Yüan-fu

PLACE

CODE

Locality **Singanfu.** 116068

People **Chinese.** Stock.

Name **Two Paintings on silk mounted on one scroll**

1. **Mountain Landscape**

2. **Cat leering at butterfly, by Yüan Yüan-fu 小軍元復**

Notes **Ching**

Width 20.5cm Length 27.5cm Height Price 10.00

CONTACT & NEG. NOS.

573

116068
CAT. NO.

1114
ACC. NO.

6023
Laufer 10

CONDITION

M: G
P: F

PUBLISHED REFERENCES

COMMENTS

NOT IN: FERGUSON, HIRTH, GILES, LEE, SICKMAN

A. small landscape, wash & ink on silk. Boldly executed but in style of Ching period.

B. Cat and butterfly ink wash, colour, on silk. Bold but hard.

'Comment By Wilbur - Early 1940s'

御田輝元復

此畫特寫以誌別
弄亭作也今弄亭悔有
弄亭老全為

三月九月既望

中行

疎林別有竹開欵板橋
對
山約我馬

A 荒邨雨歇晚涼生
對

MUS. LOCATION

No. 2. Full name
The upper right corner

Yin - fu

Yung - hua



In lower left corner

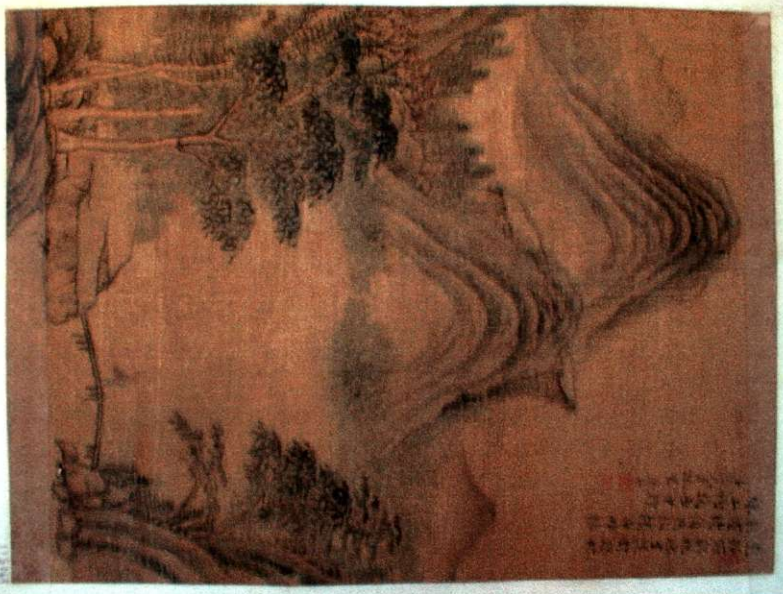


陰符 毓華

B.



A



No. 2. Field name:
for upper right corner

11P

田

upper - fu



yang - fu

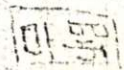


田 雙 元 頂

in lower-left corner

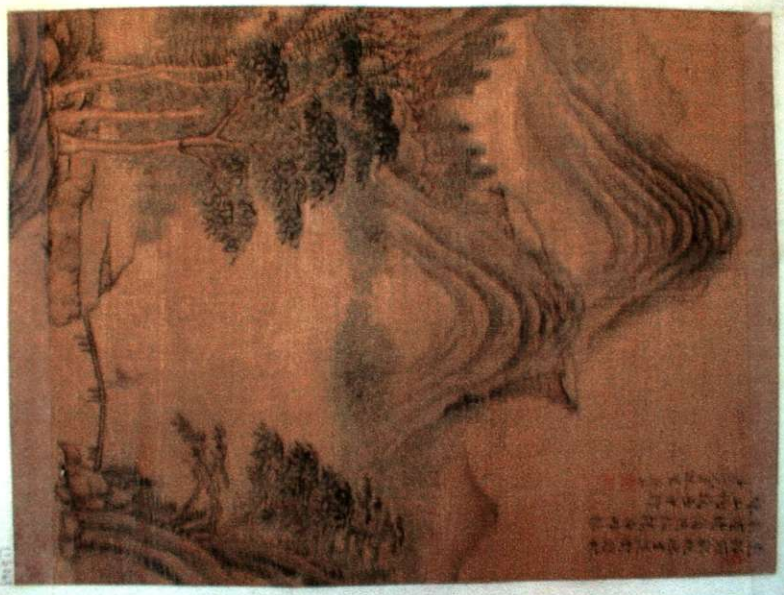


南 田



5261

116068



A

116068 A+B

A small landscape, wash + ink on silk. Badly executed but in style of Ch'ing period.

B. cat and butterfly ink wash, colour, on silk. Bold but bad.

COMMENT By WILBUR - EARLY 1940's